



PHARMACEUTICALS PROCUREMENT LIST

FIRST EDITION

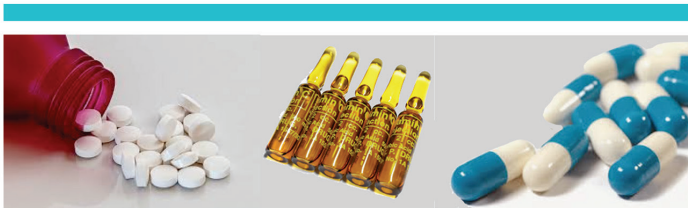
**PHARMACEUTICALS FUND AND
SUPPLY AGENCY**

April 2018
ADDIS ABABA, ETHIOPIA

PHARMACEUTICALS PROCUREMENT LIST

FIRST EDITION

PHARMACEUTICALS FUND AND
SUPPLY AGENCY



April 2018
ADDIS ABABA, ETHIOPIA

ACKNOWLEDGEMENT

The Pharmaceuticals Fund and Supply Agency (PFSA) would like to extend its appreciation to Global Health Supply Chain - Procurement and Supply Management Project (GHSC-PSM) for the technical and financial assistance for this undertaking. The Agency would also like to thank CHAI, AIDSFree and UNFPA for their technical support in the development of the list.

Last but not least, the Agency would like to give special acknowledgement to members of the taskforce (Annex I), the experts and their institutions who participated in the consultative workshops (Annex I to IV) for their invaluable contributions in enriching, coding and finalizing the list.

FOREWORD

Pharmacotherapy has always been an integral part of healthcare system and will remain so in the future. With the advent of innovative interventions its role has become even more critical and requires the continuous availability of quality, effective and affordable pharmaceuticals. Pharmaceutical Fund and Supply Agency is the public body entrusted with this role in Ethiopia. Though the Agency has been working hard to ensure the continuous availability of needed pharmaceuticals at service delivery points, there is still huge gap between demand and supply in pharmaceuticals. So far, there is no defined and agreed upon list of pharmaceuticals that the Agency procures and avails to public health facilities. As part of its transformation, the Agency has been working on preparing a defined list of pharmaceuticals that will guide its procurement and supply. After series of consultations with stakeholders involving relevant experts in each area from health facilities, FMOH, RHBs, EPHI, EHIA, development partners and the Agency, first edition of the list is now ready for use.

We are proud to introduce to you this first edition of the Pharmaceuticals Procurement List which has got buy-in by all stakeholders. Proper implementation of the list is expected to bring about significant improvement in the availability of pharmaceuticals at service delivery points. The list will set a reference against which the Agency's performance can be measured, and health facilities and other stakeholders know what can be availed through PFSA. It will also encourage the private sector's involvement in availing pharmaceuticals which are not included in this list and also persuades them to healthy competition. The list contains all categories of pharmaceuticals with full and standardized description of each product. Users of the list are expected to consistently use the descriptions used in the list in all communications and transactions they undertake for smooth exchange of information along the supply chain.

The list will be revised every two years in line with advancements in the medical and pharmaceutical sciences, in consultation with stakeholders. We would like to call upon all stakeholders to provide the necessary

support for implementation of the list and continue their support in updating

the list by forwarding comments and suggestions to the Agency through its website (www.pfsa.gov.et) or via mail (P. O. Box 21904, Addis Ababa). We also would like to take this opportunity to thank all who directly or indirectly contributed for the development of the list. We would finally like to express FMOH's and PFSA's commitment for proper implementation of the list to improve the availability of pharmaceuticals in the country and help our community to benefit from the improvement anticipated after implementation.



Dr. Loko Abraham
Director General Pharmaceuticals
Fund and Supply Agency



Dr Amir Aman
Minister
Federal Ministry of Health

| TABLE OF CONTENTS | PAGE |
|--|------|
| Acknowledgement | I |
| Foreword | II |
| Abbreviation | VI |
| Introduction | I |
| 1. List of Medicines | 5 |
| 1.1. Regular Medicines | 5 |
| 1.2 Anticancer Medicines | 18 |
| 2. List of Laboratory Reagents, Chemicals and Supplies | 22 |
| 2.1. Chemicals and Stains | 22 |
| 2.2 Clinical Chemistry Reagents | 22 |
| 2.3. Hematology Closed System Reagents | 24 |
| 2.4 Serological and Immunoassay | 25 |
| 2.5. Medical Imaging Supplies and Chemicals | 26 |
| 2.6 Laboratory Supplies | 27 |
| 2.7. Miscellaneous Chemicals | 28 |
| 3. List of Regular Medical Supplies | 30 |
| 4. List of Medical Equipment | 39 |
| 4.1. Routine Medical Equipment | 39 |
| 4.2. Capital Medical Equipment | 50 |
| 5. Health Program Pharmaceuticals | 54 |
| 5.1. ARIs | 54 |
| 5.1.1. ARV Medicines | 54 |
| 5.1.2. Opportunistic Infection Medicines | 55 |
| 5.2. STI Medicines | 55 |
| 5.3. Family Planning Contraceptives | 55 |
| 5.4. MNCH Medicines | 56 |
| 5.4.1. Maternal Health Medicines | 56 |
| 5.5 TBL Pharmaceuticals | 56 |
| 5.5.1 Pediatric Anti-Tuberculosis Medicines | 56 |
| 5.5.2. Second line Anti-Tuberculosis Medicines | 56 |
| 5.6. Anti-Leprosy Medicines | 57 |
| 5.7. Tuberculosis diagnostics & Laboratory reagents | 57 |
| 5.7.1 TB Medical Supplies | 57 |
| 5.8. Malaria Pharmaceuticals | 57 |
| 5.9. Vaccines | 58 |
| 5.9.1. Vaccine accessories | 58 |
| 5.10. Nutrition | 58 |
| 6. Procurement List Summary | 59 |
| 7. ANNEXES (Task Force and Workshop Participants) | 61 |

Abbreviations

| | |
|-----------|--|
| APTS: | Auditable Pharmaceuticals Transactions and Services |
| CHAI: | Clinton Health Access Initiative |
| EPHI: | Ethiopian Public Health Institute |
| FMOH: | Federal Ministry of Health |
| GHSC-PSM: | Global Health Supply Chain Procurement Supply Management |
| IPLS: | Integrated Pharmaceuticals Logistics System |
| MNCH: | Maternal, Neonatal and Child Health |
| RHB: | Regional Health Bureau |
| UNFPA: | United Nations Fund for Population Activities |

INTRODUCTION

The continuous availability of pharmaceuticals is key for the provision of quality health services. Pharmaceuticals Fund and Supply Agency (PFSA) is a public institution established to ensure continuous availability of quality pharmaceuticals at an affordable price to public health facilities through need-based pooled procurement. The Agency has made remarkable achievements over the past years in terms of procurement, distribution, inventory management and warehousing. The type and volume of pharmaceuticals the Agency procures and distributes has exponentially increased over the past years. The value of annually procured pharmaceuticals has increased by more than 80% in five years' time (2003 to 2008 E.C.). The value of pharmaceuticals distributed by the Agency in 2009 E.C. has increased by about 140% as compared to that of 2003 E.C. In addition to the products it procures, the Agency also handles the storage and distribution of huge amount of program products donated by development partners.

With respect to infrastructure, a total of 17 modern warehouses were constructed at the center and branches of the Agency during the last five years. This has increased the Agency's warehousing capacity to 305,910 m³ from the 16,760 m³ that was available when the Agency started operation. The inventory management across the supply chain has shown significant improvement through implementation of the Integrated Pharmaceuticals Logistics System (IPLS) and the Health Commodity Management Information System (HCMIS). The Agency, in collaboration with stakeholders and development partners, has also been involved in capacitating the supply chain workforce at all levels through in-service training, supportive supervision and mentoring. Tens of Thousands of professionals have taken trainings in various supply chain areas. With the objective of making itself more accessible to health facilities, the Agency has increased its branches to 19. The Agency has integrated the supply management of most of the program pharmaceuticals and is expanding the directly delivery of such products to service delivery points. These efforts have resulted in better availability of both revolving and program pharmaceuticals in the country.

Regardless of the efforts made and achievements gained so far, there is still a huge gap in ensuring the continuous availability of needed pharmaceuticals,

this signposts a lot to be done to continuously avail needed pharmaceuticals at service delivery points. To this end, the Agency has been involved in Business Process Reengineering (BPR) study which enabled the Agency to identify the key performance gaps and design interventions to optimize its operations. The Agency has already started implementation of the BPR at head office level through restructuring of some sub-processes. The BPR study has identified the absence of an agreed upon procurement list as one of the causes for the interrupted supply of pharmaceuticals. Though the Agency was established to avail essential pharmaceuticals, it has been trying to procure and avail all types of pharmaceuticals as per annual requests made from health facilities. This has put the Agency unfocused and having no reference list against which its performance can be measured despite the increasing efforts being made. This necessitated the need to define the list of pharmaceuticals the Agency procures and supplies to public health facilities on regular basis.

Defining the list will enable the Agency to be focused on procuring, storing and distributing pharmaceuticals that are essential for the provision of health services for majority of the population. This will improve the Agency's performance and result in better availability of these selected pharmaceuticals and reduce wastage. Health facilities will be clear on what can be supplied by the Agency on regular basis and look for options to avail products that are not supplied by the Agency.

To this end, the Agency has been refining the list of pharmaceuticals used for the annual quantification and procurement on the basis of the types of pharmaceuticals sent to the Agency by all public hospitals and selected health centers as part of their annual requirement request. It is believed that the annual requests from these health facilities have gone through series of consultations within each health facility and got approval of the health facilities Drug and Therapeutics Committees (DTC). The list of pharmaceuticals (medicines, medical supplies, medical equipment, and laboratory chemicals and reagents) included in each category of the draft list were critically reviewed by relevant experts in the consultative workshops organized. The draft medical equipment list was reviewed in a consultative workshop by experts of all clinical categories and other relevant professionals from referral, general and primary hospitals, health Centers, RHBs, FMOH and

EPHI. Medical equipment are categorized into capital and non-capital groups based on their complexity. Capital equipment are those that require signing official agreement with the Agency to initiate the procurement process. The Agency has decided that tenders for the procurement of capital equipment will be floated twice per year to minimize the burden associated with the repetitive tendering in practice so far. Consultative workshop was also organized to review the draft list of laboratory chemicals and reagents by laboratory and pharmacy professionals from hospitals, health centers, EPHI, RHBs and the Agency. While reviewing the list of products in each pharmaceutical category, due emphasis was given for standardization of description of each product, in addition to addition and deletion of products into/from the draft list.

Based on the reviews made on the draft list, descriptions of each product in the Pharmaceutical Directory Service (PDS) of the Agency is revised and standardized to be used as a reference standard in all operations of the Agency. Following this, final review workshop was organized to finalize the list. Experts from referral hospitals, RHBs, the Agency and development partners took part in the review workshop and made final polishing on each category of pharmaceuticals.

Finally, the list was coded with the national base code in a consultative workshop by participating relevant professionals (pharmacists, laboratory technologists and engineers) from selected APTS implementing hospitals in from all over the country. In the base code, the first four letters indicate the parent compound of the product, the second two numbers indicate both the strength/length/volume, dosage form and use category of the product. The base code is the same for a single product with one generic name what-ever the batch, price or country of origin is different. However, for a single product which has the same generic name, the price code, batch number code, expiry date code, country of origin code and receiving date code that will be entered automatically with the product varies. The code will be used for insuring transparency by facilitating auditing of products transacted from suppliers up to users (patients).

The efforts made by the Agency with continuous support from stakeholders and partners resulted in realization of this first edition of Pharmaceuticals Procurement List for the Agency that has got buy-in by all

stakeholders. The List will be officially communicated to FMOH, RHBs, and health facilities for their reference. The Agency will exert maximum

effort to ensure the continuous availability of the pharmaceuticals included in the list and the list will be updated every two years in line with local and global changes in disease management. The Agency will also strengthen its collaboration with all supply chain players to fully realize the goal the list is developed.

| SN | Base Code | Description | Unit |
|-------------------------------|-----------|---|--------|
| I. LIST OF MEDICINES | | | |
| I.1. REGULAR MEDICINES | | | |
| 1 | Azol-11 | Acetazolamide - 250mg – Tablet | 10x10 |
| 2 | Sali-14 | Acetylsalicylic Acid - 300mg - Tablet (Micro fined) | 10x10 |
| 3 | Sali-11 | Acetylsalicylic Acid - 81mg - Tablet(Enteric Coated) | 20x10 |
| 4 | Acyc-10 | Acyclovir - 200mg – Capsule | 10x10 |
| 5 | Acyc-45 | Acyclovir - 3% - Eye Ointment | 4.5gm |
| 6 | Acyc-11 | Acyclovir - 400mg – Tablet | 10x10 |
| 7 | Acyc-20 | Acyclovir - 40mg/ml - Oral Suspension | 125ml |
| 8 | Acyc-50 | Acyclovir - 5% - Topical Cream | 10gm |
| 9 | Acyc-32 | Acyclovir - 500mg - Powder for injection | Each |
| 10 | Adre-30 | Adrenaline (Epinephrine) - 0.1% in 1ml ampoule – Injection | Each |
| 11 | Albe-20 | Albendazole - 100mg/5ml - Oral Suspension | 20ml |
| 12 | Albe-11 | Albendazole - 400mg – Tablet | 50x2 |
| 13 | Allo-10 | Allopurinol - 100mg – Tablet | 10x5 |
| 14 | Alpr-11 | Alprazolam - 0.5mg – Tablet* | 10x3 |
| 15 | Alms-21 | Aluminium Hydroxide + Magnesium Hydroxide + Simethicone - (225mg + 200mg + 50mg)/5ml – Suspension | 200ml |
| 16 | Alma-10 | Aluminium Hydroxide + Magnesium Trisilicate - (120mg + 250mg) - Tablet (Chewable) | 100x10 |
| 17 | Amin-30 | Aminophylline - 250mg/10ml in 10ml Ampoule - Injection | 5 |
| 18 | Amio-10 | Amiodarone - 100mg – Tablet* | 10x3 |
| 19 | Amit-11 | Amitriptyline - 25mg – Tablet | 25x10 |
| 20 | Amlo-12 | Amlodipine - 10mg - Tablet | 10x10 |
| 21 | Amlo-11 | Amlodipine - 5mg – Tablet | 10x10 |
| 22 | Amox-10 | Amoxicillin - 125mg - Tablet (Dispersible) | 10x10 |
| 23 | Amox-20 | Amoxicillin - 125mg/5ml - Oral Suspension | 100ml |
| 24 | Amox-01 | Amoxicillin - 250mg – Capsule | 100x10 |
| 25 | Amox-11 | Amoxicillin - 250mg - Tablet (Dispersible) | 10x10 |
| 26 | Amox-21 | Amoxicillin - 250mg/5ml - Oral Suspension | 100ml |

| SN | Base Code | Description | Unit |
|----|-----------|---|------------------|
| 27 | Amox-02 | Amoxicillin - 500mg – Capsule | 50X10 |
| 28 | Amcl-30 | Amoxicillin + Clavulanic Acid - (500mg + 100mg) in Vial- Powder for Injection | 10 |
| 29 | Amcl-20 | Amoxicillin + Clavulanic Acid - (125mg + 31.25mg)/5ml - Oral Suspension | 100ml |
| 30 | Amcl-14 | Amoxicillin + Clavulanic Acid - (500mg + 125mg) - Tablet (Film Coated) | 5x3 |
| 31 | Amcl-12 | Amoxicillin + Clavulanic Acid - 250mg + 125mg - Tablet (Film Coated) | 10x2 |
| 32 | Ampb-31 | Amphotericin B - 50mg in vial - Injection (Liposomal) | Each |
| 33 | Ampi-20 | Ampicillin - 125mg/5ml - Oral Suspension | 100ml |
| 34 | Ampi-01 | Ampicillin - 250mg – Capsule | 100x10 |
| 35 | Ampi-21 | Ampicillin - 250mg/5ml - Oral Suspension | 100ml |
| 36 | Ampi-02 | Ampicillin - 500mg – Capsule | 50X10 |
| 37 | Ampi-31 | Ampicillin Sodium - 500mg in Vial - Injection | 50 |
| 38 | Bep1-55 | Anti-haemorrhoidal (Betamethasone Valerate + Phenylephrine HCl + Lidocaine HCl) - (0.5mg+ 1mg+25mg) – Ointment | 20gm |
| 39 | Cfce-60 | Anti-haemorrhoidal (Hydrocortisone + Framycetin + Cinchocaine + Esculoside) - (5mg + 10mg + 5mg 10mg) - Suppository | 10 |
| 40 | AntD-31 | Anti-Rho (D) Immune Globulin - 300mcg in 2ml Vial - Injection | Each |
| 41 | Aten-11 | Atenolol - 50mg – Tablet | 10x10 |
| 42 | Ator-11 | Atorvastatin - 20mg – Tablet | 10x10 |
| 43 | Ator-12 | Atorvastatin - 40mg – Tablet | 10x3 |
| 44 | Atro-41 | Atropine Sulfate - 1% - Eye Drop | 15ml |
| 45 | Atro-30 | Atropine Sulfate - 1mg/ml in 1ml ampoule - Injection | 10x10 |
| 46 | Azel-51 | Azelaic Acid - 20% - Cream | 30gm |
| 47 | Azit-20 | Azithromycin - 200mg/5ml - Oral Suspension | 15ml |
| 48 | Azit-10 | Azithromycin - 250mg – Tablet | 30 |
| 49 | Azit-11 | Azithromycin - 500mg – Tablet | 10x3 |
| 50 | Becp-41 | Beclomethasone Propionate - 100mcg/dose - Aerosol (Oral Inhalation) | 200 Metered dose |

| SN | Base Code | Description | Unit |
|----|-----------|---|-------|
| 51 | Benz-10 | Benzhexol (Trihexyphenidyl HCL) - 2mg - Tablet | 10x10 |
| 52 | Benz-11 | Benzhexol (Trihexyphenidyl HCL) - 5mg - Tablet | 10x10 |
| 53 | Besa-56 | Benzoic Acid + Salicylic Acid - (6% + 3%) - Topical Ointment | 20gm |
| 54 | Bepe-20 | Benzoyl Peroxide - 5% - Solution | 10ml |
| 55 | Trom-30 | Benztropine (Mesylate) - 1mg/ml in 2ml ampoule - Injection | Each |
| 56 | Beta-10 | Betamethasone - 0.5mg – Tablet | 10x10 |
| 57 | Phbe-10 | Betamethasone + Dexchlorpheniramine Maleate - (0.25mg+2mg) - Tablet | 10x10 |
| 58 | Betd-50 | Betamethasone Dipropionate - 0.03% - Cream | 15gm |
| 59 | Betd-56 | Betamethasone Dipropionate - 0.05% - Ointment | 20gm |
| 60 | Bisa-60 | Bisacodyl - 5mg - Suppository | 5x2 |
| 61 | Bisa-10 | Bisacodyl - 5mg – Tablet | 10x10 |
| 62 | Zepa-10 | Bromazepam - 1.5mg – Tablet | 10x10 |
| 63 | Zepa-11 | Bromazepam - 3mg – Tablet | 10x10 |
| 64 | crim-10 | Bromocriptine Mesylate - 2.5mg - Tablet | 10x3 |
| 65 | Bupi-32 | Bupivacaine - 0.75% - 2ml - Injection | Vial |
| 66 | Buph-30 | Bupivacaine Hydrochloride - 0.2% in 10ml Vial - Injection (Epidural)* | Each |
| 67 | Cala-50 | Calamine - 5% - Lotion | 100ml |
| 68 | calc-11 | Calcium Carbonate - 350mg – Tablet* | 10x10 |
| 69 | calg-30 | Calcium gluconate - 10% in 10ml Ampoule - Injection | 10 |
| 70 | Cand-11 | Candesartan - 8mg – Tablet* | 14x2 |
| 71 | Capt-10 | Captopril - 12.5mg – Tablet | 10x10 |
| 72 | Capt-11 | Captopril - 25mg – Tablet | 10x10 |
| 73 | Carb-20 | Carbamazepine - 100mg/5ml – Syrup | 100ml |
| 74 | Carb-11 | Carbamazepine - 200mg – Tablet | 10x10 |
| 75 | Cast-20 | Castor oil – Liquid | 60ml |
| 76 | Cefe-31 | Cefepime - 1gm in Vial - Powder for Injection with Solvent Water for Injection* | Each |
| 77 | Cefi-11 | Cefixime - 400mg – Tablet | 7x2 |

| SN | Base Code | Description | Unit |
|-----|-----------|--|--------|
| 78 | Cefo-30 | Cefotaxime Sodium - 0.5g in Vial - Powder for Injection with Solvent Water for Injection | Each |
| 79 | Ceft-30 | Ceftazidime - 0.5g in Vial - Powder for injection* | Each |
| 80 | Ceft-31 | Ceftazidime - 1g in vial - Powder for Injection with Diluent | Each |
| 81 | Cefr-31 | Ceftriaxone - 0.5g in Vial - Powder for Injection with 5ml Diluent | Each |
| 82 | Cefr-32 | Ceftriaxone - 1g in vial - Powder for Injection with 10ml Diluent | Each |
| 83 | Cefr-30 | Ceftriaxone - 250mg in Vial - Powder for Injection with 1% Lidocaine Hydrochloride (Intramuscular) | Each |
| 84 | Ceph-20 | Cephalexin - 125mg/5ml - Oral Suspension | 100ml |
| 85 | Ceph-01 | Cephalexin - 250mg – Capsule | 10x10 |
| 86 | Ceph-21 | Cephalexin - 250mg/5ml - Oral Suspension | 100ml |
| 87 | Ceph-02 | Cephalexin - 500mg – Capsule | 10x10 |
| 88 | Cepz-32 | Cephazoline Sodium - 1gm - Injection with Diluent | Vial |
| 89 | Ceti-11 | Cetirizine - 10mg - Tablet | 10x10 |
| 90 | Ceti-20 | Cetirizine - 1mg/ml - Oral Solution | 100ml |
| 91 | Amph-42 | Chloramphenicol - 0.5% - Eye/Ear drop | 10ml |
| 92 | amde-40 | Chloramphenicol - 0.5% + Dexamethasone 0.1% - Eye Drop | 10ml |
| 93 | Amph-46 | Chloramphenicol - 1% - Eye Ointment | 5gm |
| 94 | Amph-35 | Chloramphenicol Sodium Succinate - 1g in vial - Powder for injection | 50 |
| 95 | Chcl-10 | Chlordiazepoxide + Clonidine Bromide - (5mg + 2.5mg) - Tablet | 10x3 |
| 96 | Phen-20 | Chlorpheniramine Maleate - 2mg/5ml - Syrup | 100ml |
| 97 | Phen-11 | Chlorpheniramine Maleate - 4mg - Tablet | 10x10 |
| 98 | Cpzn-13 | Chlorpromazine Hydrochloride - 100mg - Tablet | 100x10 |
| 99 | Cpzn-11 | Chlorpromazine Hydrochloride - 25mg - Tablet | 1000 |
| 100 | Cpzn-30 | Chlorpromazine Hydrochloride - 25mg/2ml in 2ml Ampoule - Injection | 50 |
| 101 | Cime-31 | Cimetidine - 200mg/ml in 2ml ampoule - Injection | 10 |

| SN | Base Code | Description | Unit |
|-----|-----------|--|-------|
| 102 | Cime-11 | Cimetidine - 400mg – Tablet | 10x10 |
| 103 | Cipr-40 | Ciprofloxacin - 0.3% - Eye/Ear drop | 5ml |
| 104 | Cipr-10 | Ciprofloxacin - 250mg – Tablet | 10x10 |
| 105 | Cipr-30 | Ciprofloxacin - 2mg/ml - Intravenous Infusion (as lactate) | 100ml |
| 106 | Cipr-11 | Ciprofloxacin - 500mg – Tablet | 10x10 |
| 107 | Cist-30 | Cisatracurium- 2mg/ml in 10 ml Ampoule - Injection | Each |
| 108 | Clar-11 | Clarithromycin - 500mg – Tablet | 10x10 |
| 109 | Clin-10 | Clindamycin - 150mg – Tablet | 10x10 |
| 110 | Miph-10 | Clomiphene Citrate - 50mg – Tablet | 10x3 |
| 111 | Mipr-10 | Clomipramine HCL - 25mg – Tablet | 25x10 |
| 112 | Naze-10 | Clonazepam - 0.5mg – Tablet | 10x3 |
| 113 | Naze-11 | Clonazepam - 2mg – Tablet | 10x3 |
| 114 | Clot-55 | Clotrimazole - 1% - Cream | 20gm |
| 115 | Clot-60 | Clotrimazole - 100mg - Tablet (Vaginal) | 6 |
| 116 | Clot-62 | Clotrimazole - 500mg - Tablet (Vaginal) | 6 |
| 117 | Clox-20 | Cloxacillin Sodium - 125mg/5ml - Oral Suspension | 100ml |
| 118 | Clox-01 | Cloxacillin Sodium - 250mg – Capsule | 50X10 |
| 119 | Clox-21 | Cloxacillin Sodium - 250mg/5ml - Oral Suspension | 100ml |
| 120 | Clox-02 | Cloxacillin Sodium - 500 mg – Capsule | 50X10 |
| 121 | Clox-31 | Cloxacillin Sodium - 500mg in Vial - Powder for injection | 50 |
| 122 | Cloz-12 | Clozapine - 100mg – Tablet* | 10x5 |
| 123 | Code- 10 | Codeine Phosphate - 30mg – Tablet | 10x10 |
| 124 | Desm -10 | Desmopressin Acetate - 100mcg - Tablet | 10x10 |
| 125 | Dexa-40 | Dexamethasone - 0.10% - Eye/Ear drop | 10ml |
| 126 | Dexa-50 | Dexamethasone - 0.25% - Topical Cream | 15gm |
| 127 | Dexa-56 | Dexamethasone - 0.25% - Topical Ointment | 20gm |
| 128 | Dexa-10 | Dexamethasone - 0.5mg – Tablet | 10x10 |
| 129 | Dexa-14 | Dexamethasone - 4mg – Tablet | 100 |
| 130 | Dexa-30 | Dexamethasone - 4mg/ml in 1ml Ampoule - Injection | 5 |

| SN | Base Code | Description | Unit |
|-----|-----------|--|--------|
| 131 | Dext-22 | Dextromethorphan Hydro bromide - 15mg/5ml - Syrup | 125ml |
| 132 | DW40-34 | Dextrose - 40% in 20ml - Intravenous Infusion | 50 |
| 133 | DNSa-31 | Dextrose in Normal Saline - (5% + 0.9%) - Intravenous Infusion with Giving Set | 1000ml |
| 134 | DW5P-31 | Dextrose in Water - 5% - Intravenous Infusion with Giving Set | 1000ml |
| 135 | Diaz-30 | Diazepam - 5 mg/ml in 2ml ampoule - Injection | 100 |
| 136 | Diaz-11 | Diazepam - 5mg – Tablet | 10x10 |
| 137 | Dics-63 | Diclofenac Sodium - 100mg - Suppository | 10 |
| 138 | Dics-60 | Diclofenac Sodium - 12.5mg - Suppository | 10 |
| 139 | Dics-30 | Diclofenac Sodium - 25mg/ml in 3ml ampoule - Injection | 10x10 |
| 140 | Dics-11 | Diclofenac Sodium - 50mg – Tablet | 10x10 |
| 141 | Digo-20 | Digoxin - 0.05mg/ml – Elixir | 60ml |
| 142 | Digo-10 | Digoxin - 0.25mg – Tablet | 10x10 |
| 143 | Digo-31 | Digoxin - 0.25mg/ml in 2ml ampoule - Injection | 100 |
| 144 | Dime-11 | Dimenhydrinate - 50mg – Tablet | 10x10 |
| 145 | Diph-20 | Diphenhydramine Hydrochloride - 12.5mg/5ml - Elixir | 125ml |
| 146 | Dopa-30 | Dopamine Hydrochloride - 40mg/ml in 5ml Ampoule - Injection | 5 |
| 147 | Doxy-01 | Doxycycline - 100mg – Capsule | 20x10 |
| 148 | Enal-12 | Enalapril Maleate - 10mg - Tablet | 10x10 |
| 149 | Enal-11 | Enalapril Maleate - 5mg – Tablet | 10x10 |
| 150 | Ergo-30 | Ergometrine Maleate - 0.25 mg/ml in 1ml Ampoule - Injection | 10x10 |
| 151 | Erca-10 | Ergotamine Tartrate + Caffeine - (1mg+100mg) - Tablet | 10x10 |
| 152 | Eryt-20 | Erythromycin - 125 mg/5 ml - Oral Suspension | 100ml |
| 153 | Eryt-21 | Erythromycin - 200mg/5ml - Oral Suspension | 100ml |
| 154 | Eryt-10 | Erythromycin Stearate - 250 mg - Tablet | 50X10 |
| 155 | Eryt-11 | Erythromycin Stearate - 500mg – Tablet | 10x10 |

| SN | Base Code | Description | Unit |
|-----|-----------|--|-------|
| 156 | Heam-20 | Ferrous Fumarate + Folic Acid + Cyanocobalamin + Cupric sulfate + Manganese sulfate - (200mg +30mcg+1.5mg+2.5mg+2.5mg) - Syrup | 100ml |
| 157 | Fesu-20 | Ferrous Sulfate - 125mg/5ml – Syrup | 200ml |
| 158 | Fesu-11 | Ferrous Sulfate - 325mg – Tablet | 10x10 |
| 159 | Fesu-25 | Ferrous Sulfate - 75mg/0.6ml - Oral Drop | 30ml |
| 160 | Fefo-10 | Ferrous Sulfate + Folic Acid - (150mg +0.5mg) - Tablet(Enteric Coated) | 10x10 |
| 161 | Conf-02 | Fluconazole - 100mg – Capsule* | 10x10 |
| 162 | Conf-12 | Fluconazole - 200mg – Tablet | 10x10 |
| 163 | Fuci -50 | Fluocinolone Acetonide - 0.025% - Cream | 10gm |
| 164 | Fluo -01 | Fluoxetine - 20mg – Capsule | 10x2 |
| 165 | Flud-31 | Fluphenazine Decanoate - 25 mg/ml in 2ml Ampoule - Injection (Depot, oily) | 10 |
| 166 | Foli-13 | Folic Acid - 5mg – Tablet | 10x10 |
| 167 | Frus-30 | Frusemide - 10mg/ml in 2ml ampoule - Injection | 10x10 |
| 168 | Frus-11 | Frusemide - 40mg – Tablet | 10x10 |
| 169 | Fusi-50 | Fusidic Acid - 2% - Topical Cream | 10gm |
| 170 | Gent-40 | Gentamicin - 0.3% - Eye/Ear drop | 10ml |
| 171 | Gent-30 | Gentamycin - 40mg/ml in 2ml - Injection | 10x10 |
| 172 | Glib-10 | Glibenclamide - 5mg – Tablet | 10x10 |
| 173 | Glyc-60 | Glycerin - 1g - Suppository | 5 |
| 174 | Glyt-11 | Glyceryl Trinitrate (Nitroglycerine) - 0.4mg - Tablet (Sublingual) | 100 |
| 175 | Gris-10 | Griseofulvin - 125mg – Tablet | 10x10 |
| 176 | Gris-20 | Griseofulvin - 125mg/5ml - Oral Suspension | 100ml |
| 177 | Gris-11 | Griseofulvin - 250mg – Tablet | 10x10 |
| 178 | Guai-20 | Guaifenesin - 100mg/5ml – Syrup | 100ml |
| 179 | Halo-11 | Haloperidol - 1.5mg – Tablet | 10x10 |
| 180 | Halo-13 | Haloperidol - 5mg – Tablet | 10x10 |
| 181 | Halo-30 | Haloperidol - 5mg/ml in 1ml Ampule - Injection | 10x10 |
| 182 | Hald-30 | Haloperidol Decanoate - 50mg/ml in 1ml Ampoule - Injection (Depot, oily) | 5 |

| SN | Base Code | Description | Unit |
|-----|-----------|--|-------|
| 183 | Halo-45 | Halothane – Inhalation | 250ml |
| 184 | Hepa-31 | Heparin Sulfate - 5000IU/ml in 5ml - Injection | 25 |
| 185 | Hydr-30 | Hydralazine - 20mg/ml in 1ml ampoule - Injection | 5 |
| 186 | Thia-11 | Hydrochlorothiazide - 25mg – Tablet | 10x10 |
| 187 | Cort-56 | Hydrocortisone Acetate - 1% - Topical Ointment | 15gm |
| 188 | Cort-30 | Hydrocortisone Sodium Succinate - 50mg/ml in 2ml ampoule - Injection | Each |
| 189 | Hyos-11 | Hyoscine (Scopolamine) Butyl bromide - 10mg - Tablet | 10x10 |
| 190 | Hyos-33 | Hyoscine (Scopolamine) Butyl bromide - 20mg/ml in 1ml ampoule - Injection | 10x10 |
| 191 | Ibup-12 | Ibuprofen - 400mg – Tablet | 10x10 |
| 192 | Ichth-56 | Ichthammol - 10% - Topical Ointment | 20gm |
| 193 | Imip-11 | Imipramine - 25mg – Tablet | 20x5 |
| 194 | Indo-60 | Indomethacin - 100mg - Suppository | 10 |
| 195 | Indo-01 | Indomethacin - 25mg – Capsule | 10x10 |
| 196 | Inpr-31 | Insulin Isophane Biphasic (Soluble/Isophane Mixture) - (30 + 70)IU/ml in 10ml Vial - Injection(Suspension) | Each |
| 197 | Inzn-30 | Insulin Isophane Human - 100IU/ml in 10ml Vial - Injection(Suspension) | Each |
| 198 | Isnn-30 | Insulin Soluble Human - 100IU/ml in 10ml Vial - Injection | Each |
| 199 | Isof-46 | Isoflurane inhalation | 250ml |
| 200 | Keta-31 | Ketamine HCL - 50 mg/ml in 10ml Ampoule Injection - Injection | 25 |
| 201 | Keto-50 | Ketoconazole - 2% - Cream | 20gm |
| 202 | Keto-51 | Ketoconazole - 2% - shampoo | 250ml |
| 203 | Keto-10 | Ketoconazole - 200mg – Tablet | 10x10 |
| 204 | Kyj4-01 | KY Jelly (Hydroxy Ethyl Cellulose) – Gel | 82gm |
| 205 | Leca-10 | Levodopa + Carbidopa - (100mg+25mg) - Tablet | 10x3 |
| 206 | Leca-11 | Levodopa + Carbidopa - (250 mg + 25 mg) - Tablet | 10x3 |
| 207 | Lido-32 | Lidocaine HCL - 2% in 50ml – Injection | 25 |
| 208 | Liad-31 | Lidocaine HCL + Adrenaline - (2%+1:200000IU) in 20ml vial - Injection | 25 |

| SN | Base Code | Description | Unit |
|-----|-----------|---|--------|
| 209 | Lide-30 | Lidocaine HCL + Dextrose - (5% + 7.5 %)in 2ml - Injection | 5 |
| 210 | Lith-10 | Lithium Carbonate - 300mg – Tablet | 10x10 |
| 211 | Lora-10 | Loratadine - 10mg - Tablet | 10x10 |
| 212 | Lora-20 | Loratadine - 5mg/5ml – Syrup | 100ml |
| 213 | Lora-11 | Lorazepam - 1mg – Tablet | 10x10 |
| 214 | Lova-11 | Lovastatin - 20mg – Tablet | 10x10 |
| 215 | Mags-34 | Magnesium Sulfate - 50% in 10ml ampoule - Injection | 10 |
| 216 | Mann-31 | Mannitol - 20% in500ml Ampoule - Intravenous Infusion | 500ml |
| 217 | Mebe-10 | Mebendazole - 100mg – Tablet | 40x6 |
| 218 | Mebe-20 | Mebendazole - 100mg/5ml - Oral Suspension | 30ml |
| 219 | Metf-10 | Metformin - 500mg – Tablet | 10x10 |
| 220 | Pred-31 | Methyl Prednisolone - 40mg/ml in 1ml ampoule - Injection | Each |
| 221 | Sali-56 | Methyl salicylate - 25% - Ointment | 20gm |
| 222 | Dopm-10 | Methyldopa - 250mg – Tablet | 100x10 |
| 223 | Pram-20 | Metoclopramide - 0.2mg/drop - Oral Drop | 15ml |
| 224 | Pram-11 | Metoclopramide - 10mg - Tablet | 10x10 |
| 225 | Pram-21 | Metoclopramide - 5mg/5ml – Syrup | 60ml |
| 226 | Pram-30 | Metoclopramide - 5mg/ml in 2ml ampoule - Injection | 10 |
| 227 | Prol-10 | Metoprolol - 25mg – Tablet | 14 |
| 228 | Prol-11 | Metoprolol - 50mg – Tablet | 14x2 |
| 229 | Metr-20 | Metronidazole - 125mg/5ml - Oral Suspension | 100ml |
| 230 | Metr-01 | Metronidazole - 250mg – Capsule | 100x10 |
| 231 | Metr-30 | Metronidazole - 5mg/ml - Intravenous Infusion | 100ml |
| 232 | Mico-20 | Miconazole - 25mg/ml - Oral Gel | 40mg |
| 233 | Mico-50 | Miconazole Nitrate - 2% - Cream | 30gm |
| 234 | Mico-60 | Miconazole Nitrate - 200mg - Tablet (Vaginal) | 6 |
| 235 | Morp-33 | Morphine Sulfate - 10mg/ml – Injection | 10 |
| 236 | Morp-23 | Morphine Sulfate - 20mg/5ml – Syrup | 125ml |
| 237 | Morp-14 | Morphine Sulfate - 30mg – Tablet | 10x5 |
| 238 | Muvi-20 | Multivitamin - Syrup | 120ml |

| SN | Base Code | Description | Unit |
|-----|-----------|---|--------|
| 239 | Muvi-11 | Multivitamin with Minerals - Tablet | 10x10 |
| 240 | Nalo-30 | Naloxone HCL - 0.02mg/ml in 2ml ampoule - Injection | Each |
| 241 | Neos-30 | Neostigmine - 0.5mg/ml in 1ml Ampoule - Injection | 100 |
| 242 | Neos-31 | Neostigmine - 2.5mg/ml in 1ml Ampoule - Injection | 10x5 |
| 243 | Nife-02 | Nifedipine - 10mg - Capsule | 10x10 |
| 244 | Nife-12 | Nifedipine - 20mg - Tablet | 10x10 |
| 245 | Fura-56 | Nitrofurazone -0.2% - soluble dressing- Ointment | 30gm |
| 246 | Ethn -11 | Norethindrone (Norethisterone) - 5mg - Tablet | 10x3 |
| 247 | Norf-10 | Norfloxacin - 400mg - Tablet | 10x10 |
| 248 | Nyst-65 | Nystatin - 100,000IU - Cream | 30gm |
| 249 | Nyst-10 | Nystatin - 500,000 IU - Tablet | 10x10 |
| 250 | Olan-11 | Olanzapine - 5mg - Tablet | 10x10 |
| 251 | Omepr-02 | Omeprazole - 20 mg - Capsule (Enclosing Enteric Coated Granules) | 10x10 |
| 252 | Omepr-30 | Omeprazole - 4mg/ml in 10ml - Injection | Each |
| 253 | Orsp-26 | Oral Rehydration Salt - 20.7g for 1 Litre Preparation - Powder | Sachet |
| 254 | Oxhp-40 | Oxytetracycline HCL + Hydrocortisone Acetate - (5mg+15mg+ 10.000 Units)/ml - Eye/Ear drop | 5ml |
| 255 | Oxyt-45 | Oxytetracycline Hydrochloride - 0.5% - Eye Ointment | tube |
| 256 | Oxyt-32 | Oxytocin - 10 Units/ml in 1ml Ampoule - Injection | 10x10 |
| 257 | Panc-31 | Pancuronium Bromide - 2 mg/ml in 2ml Ampoule - Injection | 10x5 |
| 258 | Para-20 | Paracetamol - 120mg/5ml - Syrup | 60ml |
| 259 | para-61 | Paracetamol - 125mg - Suppository | 10x10 |
| 260 | Para-13 | Paracetamol - 500mg - Tablet | 100x10 |
| 261 | Penb-36 | Penicillin G, Benzathine - 1.2 MIU - Injection | 100 |
| 262 | Penb-37 | Penicillin G, Benzathine - 2.4 MIU - Injection | 100 |
| 263 | Penc-35 | Penicillin G, Sodium Crystalline - 1 MIU - Injection | 100 |
| 264 | Pent-30 | Pentazocine - 30mg/ml in 1 ampoule - Injection | 10 |
| 265 | Perm-55 | Permethrin - 0.05 - Cream | 30gm |
| 266 | Peth-30 | Pethidine HCL - 50mg/ml in 1ml Ampoule - Injection | 10 |

| SN | Base Code | Description | Unit |
|-----|-----------|---|--------|
| 267 | Barb-34 | Phenobarbitone - 120mg/ml - Injection | 10 |
| 268 | Barb-13 | Phenobarbitone (Phenobarbital) - 100mg - Tablet | 100x10 |
| 269 | Barb-11 | Phenobarbitone (Phenobarbital) - 30mg - Tablet | 1000 |
| 270 | Barb-31 | Phenobarbitone (Phenobarbital) Sodium - 30mg/ml - Injection | 10 |
| 271 | Hyda-11 | Phenytoin (Diphenhydantoin) - 100mg - Tablet | 100 |
| 272 | Hyda-36 | Phenytoin (Diphenhydantoin) Sodium - 250mg - Powder for injection | Each |
| 273 | Hyda-10 | Phenytoin (Diphenylhydantoin) Sodium - 50mg - Tablet | 200 |
| 274 | Pilo-40 | Pilocarpine Hydrochloride - 2% - Eye Drop | 10ml |
| 275 | Pipe-22 | Piperazine Citrate - 700mg/5ml – Elixir | 29ml |
| 276 | Pota-30 | Potassium Chloride - 150mg/ml in 10ml ampoule - Injection | 10 |
| 277 | Pota-12 | Potassium Chloride - 600mg – Tablet | 500 |
| 278 | Praz-10 | Praziquantel - 600mg – Tablet | 10x10 |
| 279 | Pred-13 | Prednisolone - 5 mg – Tablet | 100x10 |
| 280 | Penp-30 | Procaine Penicillin Fortified - 4 MIU - Powder for injection (Buffered) | 100 |
| 281 | Proc-30 | Procyclidine - 5mg/ml in 2ml ampoule - Injection | 5 |
| 282 | Prom-10 | Promethazine HCL - 25mg – Tablet | 100x10 |
| 283 | Prom-31 | Promethazine HCL - 25mg/ml in 2ml - Injection | 10x5 |
| 284 | Prom-20 | Promethazine HCL - 5mg/5ml – Elixir | 100ml |
| 285 | Prop-33 | Propofol - 10mg/ml in 20ml - Injection | 5 |
| 286 | Pron-10 | Propranolol - 10mg - Tablet | 10x10 |
| 287 | Prop-30 | Propranolol - 1mg/ml in 1ml ampoule - Injection | 10 |
| 288 | Prop-12 | Propranolol - 40mg – Tablet | 10x10 |
| 289 | Prtu-12 | Propylthiouracil - 100mg - Tablet (Scored) | 100 |
| 290 | Prtu-11 | Propylthiouracil - 50mg - Tablet (Scored) | 100 |
| 291 | Rani-30 | Ranitidine - 10mg/ml in 5ml ampoule - Injection | Each |
| 292 | Rani-10 | Ranitidine - 150mg – Tablet | 10x10 |
| 293 | Ring-31 | Ringer's Solution - Each contains Na+ 147mEq + K+ 4mEq Cl-155mEq - Intravenous Infusion with Giving Set | 1000ml |

| SN | Base Code | Description | Unit |
|-----|-----------|---|------------------|
| 294 | Risp-10 | Risperidone - 1mg – Tablet | 10x10 |
| 295 | Risp-11 | Risperidone - 2mg – Tablet | 10x10 |
| 296 | Risp-13 | Risperidone - 4mg – Tablet | 10x10 |
| 297 | Salb-45 | Salbutamol (Albuterol) - 0.1 mg/dose - Aerosol (Oral Inhalation) | 200metered doses |
| 298 | Salb-10 | Salbutamol (Albuterol) - 2mg – Tablet | 10x10 |
| 299 | Salb-20 | Salbutamol (Albuterol) - 2mg/5ml – Syrup | 100ml |
| 300 | Salp-50 | Salicylic Acid + Lactic Acid + Polidocanol - (2gm + 0.5gm + 0.2gm) - Tincture | 10ml |
| 301 | Sert-11 | Sertraline HCL - 100mg – Tablet | 10x10 |
| 302 | Sert-10 | Sertraline HCL - 50mg – Tablet | 10x10 |
| 303 | Snak-30 | Snake Venom Antiserum Polyvalent - Injection | 10ml |
| 304 | Sod4-01 | Soda Lime, Carbon Dioxide Adsorbent - Aerosol | 4.5kg |
| 305 | Sodb-30 | Sodium Bicarbonate - 7.5%(40mEq/50ml) in 50ml ampoule - Injection | 50 |
| 306 | Sodc-33 | Sodium Chloride (Normal Saline) - 0.009 - Intravenous Infusion with Giving Set | 1000ml |
| 307 | Socr-40 | Sodium Cromoglycate - 2% - Eye Drop | 10ml |
| 308 | Stib-30 | Sodium Stibogluconate - 33% W/V - Injection | 100ml |
| 309 | Valp-10 | Sodium Valproate - 200mg - Tablet (enteric coated) | 10x10 |
| 310 | Valp-20 | Sodium Valproate - 200mg/5ml – Syrup | 300ml |
| 311 | Valp-11 | Sodium Valproate - 500mg – Tablet | 10x10 |
| 312 | Spir-10 | Spironolactone - 25mg – Tablet | 10x10 |
| 313 | Sutr-20 | Sulphamethoxazole + Trimethoprim - (200mg + 40mg)/5ml - Suspension | 100ml |
| 314 | Sutr-11 | Sulphamethoxazole + Trimethoprim - (400mg + 80mg) - Tablet | 100x10 |
| 315 | Sutr-30 | Sulphamethoxazole + Trimethoprim - (400mg+80mg)/5ml Bottle - Injection | 10 |
| 316 | Sulp-51 | Sulphur - 10% - Ointment | 50gm |
| 317 | Suxa-35 | Suxamethonium Chloride (Succinylcholine) - 50 mg/ml in 10ml Vial - Powder for injection | 25 |
| 318 | Teta-30 | Tetanus Antitoxin (TAT), Equine - 1,500 IU/ml in 1ml Ampoule - Injection | 20 |

| SN | Base Code | Description | Unit |
|-----|-----------|---|--------|
| 319 | Cain-40 | Tetracaine - 0.5% - Eye Drop | 10ml |
| 320 | Tetr-45 | Tetracycline - 1% - Eye Ointment | 4gm |
| 321 | Tetr-56 | Tetracycline - 3% - Skin Ointment | 15gm |
| 322 | Epth-10 | Theophylline + Ephedrine - (120mg + 11mg) - Tablet | 100x10 |
| 323 | Thia-20 | Thiabendazole - 100mg/ml - Suspension | 120ml |
| 324 | Thia-10 | Thiabendazole - 500mg – Tablet | 10x10 |
| 325 | This-30 | Thiopental Sodium - 0.5 g - Powder for injection | 50 |
| 326 | This-31 | Thiopental Sodium - 1g in vial - Powder for injection | 50 |
| 327 | Thio-12 | Thioridazine HCL - 100mg – Tablet | 100x10 |
| 328 | Thio-11 | Thioridazine HCL - 25mg – Tablet | 100x10 |
| 329 | Thyr-11 | Thyroxin Sodium - 0.05mg – Tablet | 100 |
| 330 | Thys-12 | Thyroxin Sodium - 0.1mg – Tablet | 100 |
| 331 | Timo-40 | Timolol Maleate - 0.25% - Eye Drop | 5ml |
| 332 | Timo-41 | Timolol Maleate - 0.5% - Eye Drop | 5ml |
| 333 | Tini-10 | Tinidazole - 500 mg – Tablet | 60x4 |
| 334 | Tram-01 | Tramadol HCl - 50mg – Capsule | 10x10 |
| 335 | Tram-30 | Tramadol HCl - 50mg/ml in 2ml ampoule - Injection | 5 |
| 336 | Tria-31 | Triamcinolone Acetonide - 40mg/ml in Vial - Injection | Each |
| 337 | Pera-10 | Trifluoperazine HCL - 1mg – Tablet | 10x10 |
| 338 | Pera-11 | Trifluoperazine HCL - 5mg – Tablet | 10x10 |
| 339 | Trop-41 | Tropicamide - 1% - Eye Drop | 10ml |
| 340 | Vanc-30 | Vancomycin - 500mg – Injection | Each |
| 341 | Vanc-31 | Vancomycine - 1gm – Injection | Each |
| 342 | Vecu-30 | Vecuronium Bromide - 10 mg in vial - Powder for injection | Each |
| 343 | Vera-10 | Verapamil - 40mg – Tablet | 20 |
| 344 | Vitb-30 | Vitamin B Complex Preparations - Injection | 10x10 |

| SN | Base Code | Description | Unit |
|-----------------------------------|-----------|---|-------|
| 345 | Vitb-10 | Vitamin B Complex Preparations - Tablet | 10x10 |
| 346 | Vib1-30 | Vitamin B1 (Thiamine HCl) - 50mg/ml in 2ml ampoule - Injection | 100 |
| 347 | Vbbb-30 | Vitamin B1 + Vitamin B6 + Vitamin B12 - (100mg + 100mg + 1000mcg) - Injection | 3 |
| 348 | Vbbb-10 | Vitamin B1 + Vitamin B6 + Vitamin B12 - (100mg + 200mg + 1000mcg) - Tablet | 10x10 |
| 349 | Vb12-31 | Vitamin B12 (Cyanocobalamin) - 1000mcg/ml in 1ml ampoule - Injection | 10 |
| 350 | Vit6-12 | Vitamin B6 (Pyridoxine HCl) - 100mg - Tablet | 10x10 |
| 351 | Vitk-31 | Vitamin K1 (Phytomenadione) - 10mg/ml in 1ml ampoule - Injection | 3 |
| 352 | Wars-11 | Warfarin Sodium - 5mg – Tablet | 10x10 |
| 353 | Wate-31 | Water For Injection - 10ml – Injection | 100 |
| 354 | Wate-30 | Water For Injection - 5ml – Injection | 100 |
| 355 | Petr-57 | White Petrolatum – Ointment | 1Kg |
| 356 | Petr-56 | White Petrolatum – Ointment | 50gm |
| 357 | Xylo-40 | Xylometazoline HCL - 0.0005(0.05%) - Solution (Nasal Drops) | 10ml |
| 358 | Xylo-41 | Xylometazoline HCL - 0.001(0.1%) - Solution (Nasal Drops) | 10ml |
| 359 | Zinc-50 | Zinc Oxide 15% Cream | 75gm |
| I.2. ANTI CANCER MEDICINES | | | |
| 360 | Acti-30 | Actinomycin-D (Dactinomycin) - 0.5mg in Vial - Powder for Injection | Each |
| 361 | Atra-10 | All Trans Retinoic Acid (ATRA) - 10mg - Tablet | 30 |
| 362 | Anas-10 | Anastrozole - 1mg - Tablet (Film Coated) | 30 |
| 363 | Antg-30 | Anti-Thymocyte Globulin (Rabbit) - 25mg in Vial - Powder for Injection | Each |
| 364 | Arse-30 | Arsenic Trioxide (ATO) - 1mg/1ml in 10ml Ampoule – Injection | Each |
| 365 | Azac-30 | Azacitidine - 100mg in Vial - Powder for Injection (Lyophilized) | Each |
| 366 | Azat-11 | Azathioprine - 50mg - Tablet (Film Coated) | 10x10 |

| SN | Base Code | Description | Unit |
|-----|-----------|---|-------|
| 367 | Bend-30 | Bendamustine Hydrochloride - 100mg in Vial - Powder for Injection (Lyophilized) | Each |
| 368 | Bica-10 | Bicalutamide - 50mg – Tablet | 10x3 |
| 369 | Bleo-30 | Bleomycin sulfate - 15IU in Vial - Powder for Injection (Lyophilized) | Each |
| 370 | Bort-30 | Bortezomib - 3.5mg in Vial - Powder for Injection (Lyophilized) | Each |
| 371 | Cape-11 | Capecitabine - 500mg – Tablet | 10x3 |
| 372 | Carb-30 | Carboplatin - 150mg/15ml in Vial – Injection | Vial |
| 373 | Carbo-31 | Carboplatin - 450mg/45ml in Vial – Injection | Each |
| 374 | Carm-30 | Carmustin - 100mg - in Vial - Powder for Injection | Each |
| 375 | Ambu-10 | Chlorambucil - 2mg – Tablet | 25 |
| 376 | Cisp-30 | Cisplatin - 10mg in Vial – Injection | Each |
| 377 | Cisp-31 | Cisplatin - 50mg/50ml - Intravenous Infusion | Each |
| 378 | Clad-30 | Cladribine - 1mg/ml - in Vial - 10ml Injection | Each |
| 379 | Cyca-03 | Cyclosporine A - 50mg – Capsule | 6x5 |
| 380 | Cycl-32 | Cyclophosphamide - 1gm - in Vial - Injection | Each |
| 381 | Cycl-30 | Cyclophosphamide - 200mg - in Vial - Injection | Each |
| 382 | Cycl-31 | Cyclophosphamide - 500mg - in Vial - Injection | Each |
| 383 | Cypr-10 | Cyproterone Acetate - 50mg – Tablet | 2X10 |
| 384 | Cyta-30 | Cytarabine - 100mg in Vial - Powder for Injection | Each |
| 385 | Cyta-32 | Cytarabine - 500mg/25ml in 25ml Vial – Injection | Each |
| 386 | Daca-31 | Dacarbazine - 200mg in Vial - Powder for Injection | Each |
| 387 | Daca-32 | Dacarbazine - 500mg in Vial - Powder for Injection | Each |
| 388 | Dana-01 | Danazole - 100mg – Capsule | 60 |
| 389 | Daun-30 | Daunorubicin Hydrochloride - 20mg in Vial - Powder for Injection | Each |
| 390 | Daun-31 | Daunorubicin Hydrochloride - 50mg in Vial - Powder for Injection | Each |
| 391 | Deci-30 | Decitabine - 50mg - in Vial – Injection | Each |
| 392 | Defe-10 | Deferasirox - 250mg - Tablet | 10x10 |
| 393 | Doce-30 | Docetaxel - 80mg in Vial - Powder for Injection | Vial |
| 394 | Doxo-30 | Doxorubicin Hydrochloride - 10mg in Vial - Powder for Injection | Each |

| SN | Base Code | Description | Unit |
|-----|-----------|---|-------|
| 395 | Doxo-31 | Doxorubicin Hydrochloride - 50mg in Vial - Powder for Injection | Each |
| 396 | Epir-30 | Epirubicin - 50mg in Vial - Powder for Injection | Each |
| 397 | Etop-30 | Etoposide - 50mg/2ml in 2ml Ampoule – Injection | Each |
| 398 | Filg-30 | Filgrastim - 300mcg/0.5ml in 0.5ml Ampoule – Injection | 5 |
| 399 | Flud-30 | Fludarabine - 50mg/2m in 2ml Vial - Powder for Injection | Each |
| 400 | Fluo-31 | Fluorouracil - 50mg/10ml in 10ml Ampoule – Injection | Each |
| 401 | Leuc-10 | Folinic Acid - 15mg – Tablet | 10x10 |
| 402 | Leuc-30 | Folinic Acid - 50mg/5ml in 5ml Ampoule – Injection | 5 |
| 403 | Leuc-31 | Folinic Acid (Leucovorin) - 15mg/ml in Vial - Injection | 5 |
| 404 | Gemc-30 | Gemcitabine - 1gm in Vial - Powder for Injection | Each |
| 405 | Gose-31 | Goserelin Acetate - 10.5mg – Implant | Each |
| 406 | Gose-30 | Goserelin Acetate - 3.6mg – Implant | Each |
| 407 | Urea-10 | Hydroxyurea (Hydroxycarbamide) - 500mg – Tablet | 100 |
| 408 | Ifme-30 | Ifosfamide - 1g in Vial - Powder for Injection with Mesna | Each |
| 409 | Ifme-31 | Ifosfamide - 3gm in Vial - Powder for Injection with Mesna | Each |
| 410 | Metx-30 | Intrathecal Methotrexate - 5mg/2ml – Injection | 10 |
| 411 | Citr-30 | Intrathecal Citrabine - 100mg – Injection | Vial |
| 412 | Cort-31 | Intrathecal Hydrocortisone - 100mg – Injection | Vial |
| 413 | Irin-30 | Irinotecan - 40mg/2ml in Vial – Injection | Each |
| 414 | Irih-30 | Irinotecan HCl - 100 mg/5ml in Vial – Injection | Each |
| 415 | Aspl-30 | L-Asparaginase - 5,000 IU – Injection | Each |
| 416 | Lena-01 | Lenalidomide - 10mg - Capsule | 10x3 |
| 417 | Letr-10 | Letrozole - 2.5mg – Tablet | 10x3 |
| 418 | Lomu-30 | Lomustine - 100mg – Injection | Vial |
| 419 | Melp-10 | Melphalan - 2mg – Tablet | 25 |
| 420 | Merc-10 | Mercaptopurine - 50mg – Tablet | 10x10 |

| SN | Base Code | Description | Unit |
|-----|-----------|--|-------|
| 421 | Metx-31 | Methotrexate - 100mg/10ml – Injection | Each |
| 422 | Metx-10 | Methotrexate - 2.5mg – Tablet | 50 |
| 423 | Metx-36 | Methotrexate - 50mg - Powder for Injection | Each |
| 424 | Metx-11 | Methotrexate - 5mg – Tablet | 50 |
| 425 | Mitc-32 | Mitomycin C - 20mg – Injection | Each |
| 426 | Nillo-01 | Nilotinib - 200mg – Capsule | 7x4 |
| 427 | Onda-30 | Ondansetron - 2mg/ml – Injection | Each |
| 428 | Onda-10 | Ondansetron - 4mg – Tablet | 10 |
| 429 | Onda-31 | Ondansetron - 4mg/ml – Injection | Each |
| 430 | Oxal-30 | Oxaliplatin - 50mg/10ml - Powder for Injection | Each |
| 431 | Pacl-30 | Paclitaxel - 100mg/16.7ml – Injection | Each |
| 432 | Pacl-31 | Paclitaxel - 300mg/50ml - Injection | Each |
| 433 | Carp-01 | Procarbazine Hydrochloride - 50mg – Capsule | 5 |
| 434 | Ritu-30 | Rituximab - 100mg/10ml – Injection | Each |
| 435 | Ritu-31 | Rituximab - 500mg/50ml – Injection | Each |
| 436 | Tamo-11 | Tamoxifen Citrate - 20mg – Tablet | 10x3 |
| 437 | Thal-02 | Thalidomide - 100mg – Capsule | 100 |
| 438 | Thal-01 | Thalidomide - 50mg – Capsule | 100 |
| 439 | Topo-30 | Topotecan - 4mg - Injection (Lyophilized) | Each |
| 440 | Tran-10 | Tranexamic acid - 500 mg – Tablet | 10x10 |
| 441 | Vinb-35 | Vinblastine Sulfate - 1mg/ml in 10ml Vial - Powder for Injection | Each |
| 442 | Vinc-35 | Vincristine Sulfate - 1mg - Powder for Injection | Each |
| 443 | Vinc-36 | Vincristine Sulfate - 2mg - Powder for Injection | Each |
| 444 | Zole-30 | Zoledronic acid - 4mg/5ml in 5ml Ampoule – Injection | Each |

| SN | Base Code | Description | Unit |
|---|-----------|---|------------|
| 2. LIST OF LABORATORY REAGENTS & CHEMICALS | | | |
| 2.1. CHEMICALS AND STAINS | | | |
| 1 | EthI-05 | Chemical - Ethanol Absolute - 98.80% | Litter |
| 2 | AceI-01 | Chemical - Acetone Alcohol - 50% - Solution | 500ml |
| 3 | AceI-02 | Chemical - Acetone AR - 99.50% | 2.5 litter |
| 4 | Bufl-01 | Chemical - Buffer - PH 7.0 -Tablet | 20 tab |
| 5 | Glul-01 | Chemical- D(+) Glucose monohydrate | 500gm |
| 6 | Xyll-01 | Chemical - Dibutylphthalate Polystyrene Xylene (DPX) | 250ml |
| 7 | ForI-01 | Chemical - Formaldehyde - 10% - Solution | Liter |
| 8 | Genv-75 | Chemical - Gentian Violet - 1% - Solution | 500ml |
| 9 | Gisl-01 | Chemical - Giemsa Stain - 0.76% - Solution | 500ml |
| 10 | logI-01 | Chemical - Gram's Iodine - 0.33% - Solution | 500ml |
| 11 | HemI-01 | Chemical - Hematoxylin Stain - Powder | 50gm |
| 12 | HClI-01 | Chemical - Hydrochloric Acid - 0.1N - Solution | 500ml |
| 13 | Oili-75 | Chemical - Immersion Oil - Refractive Index of 1.515 | 100ml |
| 14 | MetI-01 | Chemical - Methanol Absolute Acetone Free - 99.00% - Solution | 1L |
| 15 | ParI-01 | Chemical - Paraffin Wax | 500gm |
| 16 | Poth-75 | Chemical - Potassium Hydroxide - 10% - Solution | 1L |
| 17 | Safr-75 | Chemical - Safranin - 0.25% - Solution | 500ml |
| 18 | Cits-75 | Chemical - Trisodium Citrate - 3.80% - Solution | 500ml |
| 19 | WBCd-75 | Chemical - White Blood Cells Diluting Fluid (Glacial Acetic Acid) - 2% - Solution | 500ml |
| 20 | Wris-75 | Chemical - Wright Stain - 0.30% - Solution | 500ml |
| 2.2. CLINICAL CHEMISTRY REAGENTS | | | |
| 21 | SGPT-75 | Clinical Chemistry - Alanine Aminotransferase -ALT (Serum Glutamic Pyruvic Transaminase - SGPT) | 200ml |
| 22 | Albu-75 | Clinical Chemistry - Albumin Liquicolor | 2X150 ml |
| 23 | Amyl-75 | Clinical Chemistry - Alfa Amylase | 100ml |
| 24 | ALPh-75 | Clinical Chemistry - Alkaline Phosphatase (ALP) | 100ml |
| 25 | SGOT-75 | Clinical Chemistry - Aspartate Aminotransferase -AST (Serum Glutamic Oxaloacetic Transaminase-SGOT) | 200ml |

| SN | Base Code | Description | Unit |
|----|-----------|--|----------|
| 26 | BILD-75 | Clinical Chemistry - Bilirubin Direct(BILD) | 160ml |
| 27 | BICL-75 | Clinical Chemistry - Bio system - Concentrated - liquid solution | 1000 ml |
| 28 | BILT-75 | Clinical Chemistry - Bilirubin Total (BILT) | 10x10ml |
| 29 | BUNi-75 | Clinical Chemistry - Blood Urea Nitrogen-BUN (Urea) | 200ml |
| 30 | Chol-75 | Clinical Chemistry - Cholesterol Total Enzymatic Colorimetric Test | 12x50ml |
| 31 | Conn-75 | Clinical Chemistry - Control, Normal (N) | 10x5ml |
| 32 | Conp-75 | Clinical Chemistry - Control, Pathological (P) | 30ml |
| 33 | Crea-75 | Clinical Chemistry – Creatinine | 250ml |
| 34 | CPKt-75 | Clinical Chemistry - Creatinine Kinase (CPK) Total | 4x10ml |
| 35 | CPKm-75 | Clinical Chemistry - Creatinine Kinase (CPK), MB | 4x10ml |
| 36 | GGTr-75 | Clinical Chemistry - Gamma-Glutamyl transferase (GGT) | 8X10 ml |
| 37 | GLEC-75 | Clinical Chemistry - Glucose Enzymatic Colorimetric Test | 200 ml |
| 38 | HDLC-75 | Clinical Chemistry - High Density Lipoprotein Cholesterol Direct Colorimetric Test (HDL-C) | 35ml |
| 39 | Lipa-75 | Clinical Chemistry - Lipase Kinetic Method | 10ml |
| 40 | LDLC-75 | Clinical Chemistry - Low Density Lipoprotein Cholesterol Direct Colorimetric Test (LDL-C) | 80ml |
| 41 | Cams-75 | Clinical Chemistry - Multipara Serum Calibrator | 10x3ml |
| 42 | Pruc-75 | Clinical Chemistry - Protein for Urine and CSF | 2x150ml |
| 43 | Prot-75 | Clinical Chemistry - Total Protein (TP) | 2x250ml |
| 44 | Trig-75 | Clinical Chemistry - Triglyceride (TG) | 12x50ml |
| 45 | Uric-75 | Clinical Chemistry - Uric Acid | 4x100ml |
| 46 | Gluc-75 | Clinical Chemistry - glucose test strip method with machine of five packs of test strip | Set |
| 47 | Hemo-75 | Clinical Chemistry - Hemoglobin - A1C | 20 tests |
| 48 | LDHy-75 | Clinical Chemistry - Lactate dehydrogenase (LDH) with Kinetic Method | 5x20ml |
| 49 | Detm -75 | Clinical Chemistry - Mindray 200E BS Detergent CD-80 | 1000ml |

| SN | Base Code | Description | Unit |
|---|-----------|--|----------|
| 2.3. HEMATOLOGY CLOSED SYSTEM REAGENTS | | | |
| 50 | LHlm-80 | Mindray 5200 CBC + DIFF, LH Lyse | 2 L |
| 51 | Lysm -80 | Mindray 5200 CBC + DIFF, Lyse | 4 L |
| 52 | prcm-80 | Mindray 5200 CBC + DIFF, Probe cleanser | 50ml |
| 53 | Colm-85 | Mindray 5800 CBC + DIFF, Control Low | 5ml |
| 54 | Dilm-85 | Mindray 5800 CBC + DIFF, Diluent | 20 L |
| 55 | Lblm-85 | Mindray 5800 CBC + DIFF, LBA Lyse | 4 L |
| 56 | Lelm-85 | Mindray 5800 CBC + DIFF, LEO (I) Lyse | 40 L |
| 57 | Lelm-86 | Mindray 5800 CBC + DIFF, LEO (II) Lyse | 2 L |
| 58 | Lhlm-85 | Mindray 5800 CBC + DIFF, LH Lyse | 2 L |
| 59 | Prcm-85 | Mindray 5800 CBC + DIFF, Probe cleanser | 50ml |
| 60 | Urid-75 | Urine Dipstick 10 Parameters (Blood, Bilirubin, Urobilinogen, Ketone, Protein, Nitrite, Glucose, PH, Specific Gravity, Leucocytes) | 100tests |
| 61 | Conm-85 | Mindray 5800BC + DIFF, Control Normal | 5ml |
| 62 | Cohm-85 | Mindray 5800 CBC + DIFF, Control High | 5ml |
| 63 | Calm-85 | Mindray 5800 CBC + DIFF, Calibrator | 3ml |
| 64 | ezcm-75 | Mindray BC3000, E-Z Cleaner, 100mL | 100ml |
| 65 | Lysm-75 | Mindray BC3000, M-30 L Lyse, 500mL | 500ml |
| 66 | Rinm-75 | Mindray BC3000, M-30 R Rinse, 20L | 20 L |
| 67 | Dilm- 75 | Mindray BC3000, M-30 D Diluent, 20L | 20 L |
| 68 | Prcm-75 | Mindray BC3000, M-30P Probe cleanser, Bottle 12 x 17mL | 12x17ml |
| 69 | Colm-75 | Mindray BC3000, B-30 Control, Low, 6x3ml | 6x3ml |
| 70 | Conm-75 | Mindray BC3000, B-30 Control, Normal, 6x3ml | 6x3ml |
| 71 | Cohm-75 | Mindray BC3000, B-30 Control, High, 6x3ml | 6x3ml |
| 72 | Calm-75 | Mindray BC3000, B-30, Calibrator | 6x3ml |
| 73 | Dild-75 | Dcells 60, Dia-Diluent-D | 20 L |
| 74 | Rind-75 | Dcells 60, Dia-Rinse-D | 20 L |
| 75 | lysd-75 | Dcells 60, Dia-Lyse-Diff-D-CF | 500ml |
| 76 | ezcd-75 | Dcells 60, Dia-EZ cleanser D | 50ml |
| 77 | prcd-75 | Dcells 60, Dia probe cleaner D | 50ml |
| 78 | Chld-75 | Dcells 60, D-check low | 2ml |

| SN | Base Code | Description | Unit |
|---|-----------|---|----------|
| 79 | Chnd-75 | Dcells 60, D-check normal | 2ml |
| 80 | Chhd-75 | Dcells 60, D-check high | 2ml |
| 81 | Cald-75 | Dcells 60, D-calibrator plus | 2ml |
| 2.4. SEROLOGICAL AND IMMUNOASSAY | | | |
| 82 | ANAn-75 | Serology - Anti Nucleic Antibody (ANA) | 20tests |
| 83 | Hcgt-75 | Serology - Pregnancy Test Strip | 50tests |
| 84 | Trop-75 | Serology - Troponin Test Cassese | 20tests |
| 85 | Alfp-75 | Serology - Alfa Feto Protein (AFP), Cassette | 40tests |
| 86 | ABDm-75 | Serology - Anti-A, Anti-B, Anti-D Monoclonal Antibody | 3x10ml |
| 87 | Ahgt-75 | Serology - Anti-Human Globulin-AGT (Coombs') IgG and IgM Test | 3x10ml |
| 88 | Asot-75 | Serology - Anti-Streptomycin O Antibody (ASO) Latex agglutination test | 50tests |
| 89 | Crpc-75 | Serology - C-Reactive Protein (CRP) Test Cassette | 50tests |
| 90 | Cryp-75 | Serology - Cryptococcal Reagent, Latex Agglutination Test | 50tests |
| 91 | Hpyg-75 | Serology - Helicobacter Pylori (H. Pylori) Antigen Test Strip | 50tests |
| 92 | Hpyb-75 | Serology - Helicobacter Pylori (H. Pylori) Antibody Test Strip | 100tests |
| 93 | Hbsa-75 | Serology - Hepatitis BsAg Test Cassette | 30tests |
| 94 | Hcva-75 | Serology - Hepatitis C Antibody Test Cassette | 40tests |
| 95 | Bloc-75 | Serology - Occult Blood Immunological Immunochromatographic Test | 50tests |
| 96 | Prsa-75 | Serology - Prostate Specific Antigen Immunochromatographic Test Cassette | 25tests |
| 97 | Prox-75 | Serology - Proteus OX-19 Antigen | 5ml |
| 98 | RPRa-75 | Serology - Rapid Plasma Ragin-RPR (Venereal Disease Research Laboratory-VDRL) | 100tests |
| 99 | Rhfa-75 | Serology - Rheumatoid Factor (RF) Test Slide | 50tests |
| 100 | Shso-75 | Serology - Salmonella Typhi "H" + Salmonella Typhi "O" Antigen (Widal) Test, agglutination method | 2x5ml |
| 101 | Tpha-75 | Serology - Treponema Pallidum Haemo-Agglutination (TPHA) Test | 50tests |

| SN | Base Code | Description | Unit |
|--|-----------|---|-------------------|
| 2.5. MEDICAL IMAGING SUPPLIES AND CHEMICALS | | | |
| 102 | Bars-25 | Chemical - Chemical - Barium Sulfate - Powder | sachets |
| 103 | Xrad-70 | Chemical - Chemical - Dental x-ray film 3x4cm | 150 |
| 104 | Gado-30 | Chemical - Gadolinium Chelate 1 mml/ml solution for injection | 10 ml |
| 105 | lopa-31 | Chemical - Iopamiron Injection solution, 76%, iodine: 370 mg / ml | 50 ml x10 Vial |
| 106 | Ultrg-70 | Chemical - Ultrasound gel 2 liter plastic holder | bag |
| 107 | Ultrp-70 | Chemical - Ultrasound paper | Roll |
| 108 | lopa-30 | Chemical - Urography, Injection, 76% .370mg iodine/ml (Iopamiron) | 20ml |
| 109 | Xraf-70 | Chemical - X - Ray Film 13x18cm , blue box | 100 |
| 110 | Xraf-71 | Chemical - X - Ray Film 15x40cm, blue box | 100 |
| 111 | Xraf-72 | Chemical - X - Ray Film 18 x 24cm, blue box | 100 |
| 112 | Xraf-73 | Chemical - X - Ray Film 20 x 40cm, blue box | 100 |
| 113 | Xraf-74 | Chemical - X - Ray Film 24x30cm, blue box | 100 |
| 114 | Xraf-75 | Chemical - X - Ray Film 30 x 40cm, blue box | 100 |
| 115 | Xraf-77 | Chemical - X - Ray Film 35x43cm, blue box | 100 |
| 116 | Xraf-76 | Chemical - X - Ray Film 35x35cm blue, blue box | 100 |
| 117 | XrdI-01 | Chemical - X - Ray Film Developer to Make 10 liters | sachets |
| 118 | Xrfl-01 | Chemical - X-Ray Film Fixer to Make 10 liters | sachets |
| 119 | Filc-73 | Chemical - CT Scan/MRI Films 35x43cm | 100 |
| 120 | Filc-70 | Chemical - CT Scan/MRI Films 18x24cm | 100 |
| 121 | Filc-71 | Chemical - CT Scan/MRI Films 24x30cm | 100 |
| 122 | Filc-72 | Chemical - CT Scan/MRI Films 35X35cm | 100 |
| 123 | Filc-73 | Chemical - CT Scan/MRI Films 35X43cm | 100 |
| 124 | Film-70 | Chemical - Mammography Film 24x30cm | 100 |
| 125 | Xrfd-70 | Chemical - Digital X - Ray Film 18x24cm | 100 |
| 126 | Xrfd-71 | Chemical - Digital X - Ray Film 24X30cm | 100 |
| 127 | Xrfd-72 | Chemical - Digital X - Ray Film 35x35cm | 100 |
| 128 | Xrfd-73 | Chemical - Digital X-Ray Film 35x43cm | 100 |
| | | | |

| SN | Base Code | Description | Unit |
|---------------------------------|-----------|--|-------|
| 2.6. LABORATORY SUPPLIES | | | |
| 129 | Stiw-70 | Laboratory Supplies - Applicator stick wooden 15cm long thickness 2.5mm without cotton | 100 |
| 130 | Lanc-70 | Laboratory Supplies - Contact activated blood lancet (automatic) 2mm | 500 |
| 131 | Sect-70 | Laboratory Supplies - Capillary tube sealer of 2mm thickness | 2x5mm |
| 132 | Slc3-01 | Laboratory Supplies - Cover slides rectangular size 22x22 mm thickness 0.13 mm | 100 |
| 133 | Tubt-70 | Laboratory Supplies - Plastic Conical test tube graduated 15 ml | 50 |
| 134 | Dro3-01 | Laboratory Supplies - Dropping bottle with ground glass stopper 50 ml | Each |
| 135 | Cape-70 | Laboratory Supplies - EDTA Hematocrit capillary tube length 75mm ID 1.1-1.2mm OD 1.5-1.6mm, 50 μ | 100 |
| 136 | Esr3-01 | Laboratory Supplies - ESR graduated pipit Waster green, 100Cm length | 100 |
| 137 | Fil3-02 | Laboratory Supplies - Filter paper qualitative whatman grade I diameter 150 mm | 100 |
| 138 | Fla3-01 | Laboratory Supplies - Flask heat and chemical resistant 250 ml | Pcs |
| 139 | Fla3-02 | Laboratory Supplies - Flask heat and chemical resistant 500 ml | Pcs |
| 140 | Fla3-03 | Laboratory Supplies - Flask heat and chemical resistant 1000 ml | Pcs |
| 141 | Fun3-01 | Laboratory Supplies - Funnel glass 100mm | Pcs |
| 142 | Suck-70 | Laboratory Supplies - Manual sucker | Pcs |
| 143 | Cyl3-01 | Laboratory Supplies - graduated Measuring cylinder 25ml | Pcs |
| 144 | Cyl3-02 | Laboratory Supplies - graduated Measuring cylinder 50 ml | Pcs |
| 145 | Cyl3-03 | Laboratory Supplies - graduated Measuring cylinder 100 ml | Pcs |
| 146 | Cyl3-06 | Laboratory Supplies - graduated Measuring cylinder 1000ml | Pcs |
| 147 | Tipm-70 | Laboratory Supplies - Micropipette tips 10-200 μ l | 1000 |

| SN | Base Code | Description | Unit |
|-------------------------------------|-----------|---|-----------|
| 148 | Tipm-71 | Laboratory Supplies - Micropipette tips 200-1000 µl | 1000 |
| 149 | Sln3-01 | Laboratory Supplies - Microscope slides size 27x75 mm thickness 1.2mm non-frosted | 50 |
| 150 | Slf3-01 | Laboratory Supplies - Microscope slides size 27x75 mm thickness 1.2mm frosted | 50 |
| 151 | Pipp-70 | Laboratory Supplies - Pasteur pipette (plastic) non-sterile 3ml | 500 |
| 152 | Pip3-01 | Laboratory Supplies - Pipette 2 ml graduated | Pcs |
| 153 | Pip3-02 | Laboratory Supplies - Pipette 5 ml graduated | Pcs |
| 154 | Pip3-03 | Laboratory Supplies - Pipette 10ml graduated | Pcs |
| 155 | Cupt-70 | Laboratory Supplies - Stool Specimen Container disposable of polypropylene, with Cover | Pcs |
| 156 | Cupu-70 | Laboratory Supplies - Urine cup plastic 40ml capacity | 1000 |
| 157 | Vacp-70 | Laboratory Supplies - Vacutainer blood collector tube with EDTA anti-coagulant purple top 4ml | 100 |
| 158 | Vacb-70 | Laboratory Supplies - Vacutainer blood collector tube with citrated anti-coagulant blue top 4ml | 100 |
| 159 | Vacr-70 | Laboratory Supplies - Vacutainer blood collector tube vacuum red top 10ml | 100 |
| 160 | Vanh-70 | Laboratory Supplies - Vacutainer Needle holder | 500 |
| 161 | Vacn-70 | Laboratory Supplies - Vacutainer Needle 21G | 100 |
| 162 | Vacy-70 | Laboratory Supplies - Vacutainer Serum Separator(SS) tube yellow top 5ml | 100 |
| 163 | Was3-01 | Laboratory Supplies - Wash bottle 500 ml | Pcs |
| 164 | Pipt-70 | Laboratory Supplies - WBC Thomas pipette | Pcs |
| 2.7. MISCELLANEOUS CHEMICALS | | | |
| 165 | Eth1-01 | Chemical - Alcohol 70% solution(Ethanol) | Litter |
| 166 | Hec2-01 | Chemical - Chlorhexidine Gluconate +Cetrimide 1.5%+15%w/v Solution | Litter |
| 167 | Etr1-01 | Chemical - Diethyl Ether 98% solution | 2.5litter |
| 168 | lot2-01 | Chemical - Iodine Tincture - 2% - Solution | 500ml |
| 169 | lol1-01 | Chemical - Lugol's Iodine for Medical Use - 5% - Solution | 500ml |
| 170 | lop2-01 | Chemical - Povidone Iodine - 10% - Solution | 130ml |
| 171 | Soh1-01 | Chemical - Sodium Hypochlorite - 5% - Solution | 1000ml |

| SN | Base Code | Description | Unit |
|-----|-----------|---|-------|
| 172 | BacI-01 | Chemical - Barium chloride, powder | 500gm |
| 173 | BenI-01 | Chemical - Benzoic acid | 500gm |
| 174 | ForI-02 | Chemical - Formalin 37% solution | Liter |
| 175 | GlyI-01 | Chemical- Glycerin Pure - 98% | IL |
| 176 | HypI-02 | Chemical - Hydrogen Peroxide - 30% - Solution | IL |
| 177 | SalI-01 | Chemical - Salicylic Acid - Powder | 500gm |
| 178 | VioI-01 | Chemical - Vioform Powder BP | 500gm |

| SN | Base Code | Description | Unit |
|--|-----------|--|-------|
| 3. LIST OF REGULAR MEDICAL SUPPLIES | | | |
| 1 | Plaz-73 | Adhesive Plaster Zinc Oxide - 12.5cmx10m | Roll |
| 2 | Plaz-72 | Adhesive Plaster Zinc Oxide - 7.5cmx10m | Roll |
| 3 | Stic-70 | Applicator Stick Wooden with Cotton Tip - 15cmx-2.2mm | 100 |
| 4 | Apro-70 | Apron Plastic Protection Against Most Chemicals - 80cmx120cm | Each |
| 5 | Tapa-70 | Autoclave Indicator Tape - 1.9cmx5m | Each |
| 6 | Bane-70 | Bandage Elastic - 8cmx5m | Each |
| 7 | Bant-70 | Bandage Triangular - 96cmx96cmx136cm | Each |
| 8 | Bagb-71 | Blood Collecting Bag CPDAI Anticoagulant Quadruple - 450ml | Each |
| 9 | Bagb-70 | Blood Collecting Bag CPDAI Anticoagulant Single - 350ml | Each |
| 10 | Ivca-72 | Cannula Intravenous Set - 18G | 100 |
| 11 | Ivca-73 | Cannula Intravenous Set - 20G | 100 |
| 12 | Ivca-74 | Cannula Intravenous Set - 22G | 100 |
| 13 | Ivca-75 | Cannula Intravenous Set - 24G | 100 |
| 14 | catg-70 | Cat Gut Chromic - Gauge 2.0(4/0) 75cm on 15mm 1/2 Circle Reverse Cutting Needle | Dozen |
| 15 | catg-71 | Cat Gut Chromic - Gauge 2.0(4/0) 75cm on 15mm 1/2 Circle Round Bodied Needle | Dozen |
| 16 | catg-72 | Cat Gut Chromic - Gauge 3.0(3/0) 75cm on 25 mm 1/2 Circle Reverse Cutting Needle | Dozen |
| 17 | catg-73 | Cat Gut Chromic - Gauge 3.0(3/0) 75cm on 25 mm 1/2 Circle Round Bodied Needle | Dozen |
| 18 | catg-79 | Cat Gut Chromic - Gauge 3.5(2/0) 75cm on 27 mm 1/2 Circle Round Bodied Needle | Dozen |
| 19 | catg-81 | Cat Gut Chromic - Gauge 4.0(0) 75cm on 30 mm 1/2 Circle Round Bodied Needle | Dozen |
| 20 | catg-78 | Cat Gut Chromic -Gauge 3.5(2/0) 75cm on 27mm 1/2 Circle Reverse Cutting Needle | Dozen |
| 21 | catg-80 | Cat Gut Chromic -Gauge 4.0(0) 75cm on 30 mm 1/2 Circle Reverse Cutting Needle | Dozen |

| SN | Base Code | Description | Unit |
|----|-----------|---|-------|
| 22 | catg-82 | Cat Gut Chromic -Gauge 5.0(1) 75cm on 48 mm ½ Circle Reverse Cutting Needle | Dozen |
| 23 | catg-83 | Cat Gut Chromic -Gauge 5.0(1) 75cm on 48 mm ½ Circle Round Bodied Needle | Dozen |
| 24 | catg-84 | Cat Gut Chromic -Gauge 6.0(2) 75cm on 35 mm ½ Circle Reverse Cutting Needle | Dozen |
| 25 | catg-85 | Cat Gut Chromic -Gauge 6.0(2) 75cm on 35 mm ½ Circle Round Bodied Needle | Dozen |
| 26 | catg-87 | Cat Gut Chromic -Gauge 7.0(3) 75cm on 48 mm 1/2 Circle Reverse Cutting Needle | Dozen |
| 27 | catg-88 | Cat Gut Chromic -Gauge 7.0(3) 75cm on 48mm 1/2 Circle Round Bodied Needle | Dozen |
| 28 | Catc-71 | Catheter Condom Latex Medium - 28mm | Each |
| 29 | Catf-85 | Catheter Foley Siliconized Latex Three Ways - 30-50ml Balloon 18CH | Each |
| 30 | Catf-89 | Catheter Foley Siliconized Latex Three Ways - 30-50ml Balloon 22CH | Each |
| 31 | Catf-91 | Catheter Foley Siliconized Latex Three Ways - 30-50ml Balloon 24CH | Each |
| 32 | Catf-79 | Catheter Foley Siliconized Latex Three Ways- 5-15ml Balloon 12CH | Each |
| 33 | Catf-81 | Catheter Foley Siliconized Latex Three Ways -5-15ml Balloon 14CH | Each |
| 34 | Catf-71 | Catheter Foley Siliconized Latex Three Ways- 5-15ml Balloon 4CH | Each |
| 35 | Catf-75 | Catheter Foley Siliconized Latex Three Ways- 5-15ml Balloon 8CH | Each |
| 36 | Catf-82 | Catheter Foley Siliconized Latex Two Ways- 30-50ml Balloon 16CH | Each |
| 37 | Catf-86 | Catheter Foley Siliconized Latex Two Ways- 30-50ml Balloon 20CH | Each |
| 38 | Catf-76 | Catheter Foley Siliconized Latex Two Ways- 5-15ml Balloon 10CH | Each |
| 39 | Catf-72 | Catheter Foley Siliconized Latex Two Ways -5-15ml Balloon 6CH | Each |
| 40 | Cato-71 | Catheter Nasal Oxygen for Adult | Each |

| SN | Base Code | Description | Unit |
|----|-----------|---|-------|
| 41 | Cato-70 | Catheter Nasal Oxygen for Pediatrics | Each |
| 42 | Cats-74 | Catheter Suction - 14CH | 100 |
| 43 | Cats-76 | Catheter Suction - 18CH | 100 |
| 44 | Cats-78 | Catheter Suction - 22CH | 100 |
| 45 | Cats-80 | Catheter Suction - 26CH | 100 |
| 46 | Cats-70 | Catheter Suction - 6CH | 100 |
| 47 | Cats-71 | Catheter Suction - 8CH | 100 |
| 48 | Catu-70 | Catheter Ureteral -10CH | Each |
| 49 | Catu-74 | Catheter Ureteral -14CH | Each |
| 50 | Catu-76 | Catheter Ureteral -18CH | Each |
| 51 | Catu-78 | Catheter Ureteral -22CH | Each |
| 52 | Catu-80 | Catheter Ureteral -24CH | Each |
| 53 | Wirc -70 | Cerclage-Wire, 1.0 diameter with 10 meter length | Each |
| 54 | Wirc -71 | Cerclage-Wire, 1.4 diameter with 10 meter length | Each |
| 55 | Wirc-72 | Cerclage-Wire, 1.8 diameter with 10 meter length | Each |
| 56 | Colc-70 | Collar-Cervical ,Soft | Each |
| 57 | Bagc-71 | Colostomy Bag Adhesive Regulator Closed - 25cmx-14cm 30mm Opening Adult Opaque Medium | Each |
| 58 | Bagc-70 | Colostomy Bag Adhesive Regulator Closed - 25cmx-14cm 30mm Opening Pediatric | Each |
| 59 | Cott-72 | Cotton Absorbent Wool - 100gm | Each |
| 60 | Arcd-70 | Dental Arch Bar | Dozen |
| 61 | Need-70 | Dental Needle - 21mm, 27G | 100 |
| 62 | Need-71 | Dental Needle - 31mm, 27G | 100 |
| 63 | Tubc-70 | Drainage Chest Tube -10FG | Each |
| 64 | Tubc-74 | Drainage Chest Tube -18FG | Each |
| 65 | Tubc-76 | Drainage Chest Tube -22FG | Each |
| 66 | Tubc-79 | Drainage Chest Tube -28FG | Each |
| 67 | Tubc-81 | Drainage Chest Tube -32FG | Each |
| 68 | Tubc-84 | Drainage Chest Tube -38FG | Each |
| 69 | Tube-71 | Endotracheal Tube Cuffed- 3CH | Each |
| 70 | Tube-73 | Endotracheal Tube Cuffed- 4CH | Each |

| SN | Base Code | Description | Unit |
|-----|-----------|---|----------|
| 71 | Tube-75 | Endotracheal Tube Cuffed- 5CH | Each |
| 72 | Tube-77 | Endotracheal Tube Cuffed- 6CH | Each |
| 73 | Tube-79 | Endotracheal Tube Cuffed- 7CH | Each |
| 74 | Tube-81 | Endotracheal Tube Cuffed- 8CH | Each |
| 75 | Tube-86 | Endotracheal Tubes without Cuffs with ID -3.0CH | Each |
| 76 | Tube-88 | Endotracheal Tubes without Cuffs with ID -4.0CH | Each |
| 77 | Mask-72 | Face Mask Adult - Adult Standard Size | 50 |
| 78 | Mash-70 | Face Mask with Face Shield | 50 |
| 79 | Gaub-72 | Gauze Bandage - 12.5cmx5m | Dozen |
| 80 | Gaub-70 | Gauze Bandage - 7.5cmx5m | Dozen |
| 81 | Gaup-70 | Gauze Paraffin Sterile with Case - 10cm x 10cm | 10 |
| 82 | Gauz-70 | Gauze Surgical -90cmx100m mesh size 19x15 | Roll |
| 83 | Gaus-70 | Gauze Swab - 10cmx10cm | 10 |
| 84 | Glov-76 | Glove Examination Latex Non Powdered - Large | 100 |
| 85 | Glov-75 | Glove Examination Latex Non Powdered - Medium | 100 |
| 86 | Glov-74 | Glove Examination Latex Non Powdered - Small | 100 |
| 87 | Glog-70 | Glove Gynecological Examination(Elbow Glove) No-6.5 | Pair |
| 88 | Glog-71 | Glove Gynecological Examination(Elbow Glove) No-7.5 | Pair |
| 89 | Glod-72 | Glove Heavy Duty Latex (Disposable) - large | Pair |
| 90 | Glod-71 | Glove Heavy Duty Latex (Disposable) - medium | Pair |
| 91 | Glov-70 | Glove Surgical Latex Powder -Free Sterile -No.6.5 | 50 pairs |
| 92 | Glov-71 | Glove Surgical Latex Powder -Free Sterile -No.7 | 50 pairs |
| 93 | Glov-72 | Glove Surgical Latex Powder -Free Sterile -No.7.5 | 50 pairs |
| 94 | Glov-73 | Glove Surgical Latex Powder -Free Sterile -No.8 | 50 pairs |
| 95 | gogg-70 | Goggle Eye plastic | Each |
| 96 | Kwir-70 | K-wire 0.8 mm diameter with 15 cm length | Each |
| 97 | Kwir-71 | K-wire 1.2 mm diameter with 15 mm length | Each |
| 98 | Kwir-72 | K-wire 1.6 mm diameter with 25 mm length | Each |
| 99 | Kwir-73 | K-wire 2.0 mm diameter with 25 mm length | Each |
| 100 | Kwir-74 | K-wire 2.6 mm diameter with 50 mm length | Each |
| 101 | Enve-70 | Medicine Envelope Plastic | 1000 |

| SN | Base Code | Description | Unit |
|-----|-----------|---|-------|
| 102 | Sirc-71 | Mersilk Braided Black -Gauge 2.0 (3/0) 75cm on 26 mm ½ Circle Reverse Cutting Needle | Dozen |
| 103 | Silr-71 | Mersilk Braided Black -Gauge 2.0(3/0) 75cm on 26 mm ½ Circle Round Bodied Needle | Dozen |
| 104 | Silc-73 | Mersilk Braided Black -Gauge 3.5(0) 75cm on 32 mm ½ Circle Cutting Tapper Needle | Dozen |
| 105 | Silr-73 | Mersilk Braided Black -Gauge 3.5(0) 75cm on 32 mm ½ Circle Round Bodied Needle | Dozen |
| 106 | Sirc-74 | Mersilk Braided Black -Gauge 4.0(1) 75cm on 30 mm ½ Circle Reverse Cutting Needle | Dozen |
| 107 | Silr-74 | Mersilk Braided Black -Gauge 4.0(1) 75cm on 30 mm ½ Circle Round Bodied Needle | Dozen |
| 108 | Sirc-70 | Mersilk Braided Black -Gauge 1.5(4/0) 75cm 20 mm 1/2 Circle Reverse Cutting Needle | Dozen |
| 109 | Silr-70 | Mersilk Braided Black -Gauge 1.5(4/0) 75cm on 20 mm 1/2 Circle Round Bodied Needle | Dozen |
| 110 | Sirc-72 | Mersilk Braided Black -Gauge 3.0(2/0) 75cm on 33 mm 1/2 Circle Reverse Cutting Needle | Dozen |
| 111 | Silr-72 | Mersilk Braided Black Gauge 3.0(2/0) 75cm on 33 mm 1/2 Circle Round Bodied Needle | Dozen |
| 112 | Sirc-75 | Mersilk Braided Black -Gauge 5.0(2) 75cm on 38 mm 1/2 Circle Reverse Cutting Needle | Dozen |
| 113 | Silr-75 | Mersilk Braided Black -Gauge 5.0(2) 75cm on 38 mm 1/2 Circle Round Body Needle | Dozen |
| 115 | Silr-76 | Mersilk Braided Black -Gauge 6.0(3) 75cm on 40 mm on 1/2 Circle Round Body Needle | |
| 116 | Naga-75 | Naso-gastric Tube Sterile Adult - 14CH | Each |
| 117 | Naga-76 | Naso-gastric Tube Sterile Adult - 16CH | Each |
| 118 | Naga-77 | Naso-gastric Tube Sterile Adult - 18CH | Each |
| 119 | Naga-78 | Naso-gastric Tube Sterile Adult - 20CH | Each |
| 120 | Naga-79 | Naso-gastric Tube Sterile Adult - 22CH | Each |
| 121 | Naga-80 | Naso-gastric Tube Sterile Adult - 24CH | Each |
| 122 | Naga-81 | Naso-gastric Tube Sterile Adult - 26CH | Each |
| 123 | Naga-73 | Naso-gastric Tube Sterile Infant - 10CH | Each |
| 124 | Naga-74 | Naso-gastric Tube Sterile Infant - 12CH | Each |

| SN | Base Code | Description | Unit |
|-----|-----------|---|-------|
| 125 | Naga-70 | Naso-gastric Tube Sterile Infant - 4CH | Each |
| 126 | Naga-71 | Naso-gastric Tube Sterile Infant - 6CH | Each |
| 127 | Naga-72 | Naso-gastric Tube Sterile Infant - 8CH | Each |
| 128 | Orop-72 | Oropharyngeal Airway (Guedel) Sterile - 120mm | Each |
| 129 | Orop-70 | Oropharyngeal Airway (Guedel) Sterile - 60mm | Each |
| 130 | Orop-71 | Oropharyngeal Airway (Guedel) Sterile - 90mm | Each |
| 131 | Mask-71 | Oxygen Face Mask for Adult | Each |
| 132 | Mask-70 | Oxygen Face Mask for Pediatrics | Each |
| 133 | Plpa-71 | Plaster Of Paris (P.O.P) - 10cmx3m | Dozen |
| 134 | Plpa-72 | Plaster Of Paris (P.O.P) - 15cmx3m | Dozen |
| 135 | Pomd-70 | Polyamide Monofilament - Gauge 0.2(10/0) 38cm on 6mm 1/3 Circle Spatula Double Armed Needle | Dozen |
| 136 | Poms-70 | Polyamide Monofilament - Gauge 0.2(10/0) 38cm on 6mm 3/8 Circle Spatula Single Armed Needle | Dozen |
| 137 | Poms-71 | Polyamide Monofilament - Gauge 0.3(9/0) 30cm on 6.5mm 3/8 Circle Spatula Single Armed Needle | Dozen |
| 138 | Pomd-71 | Polyamide Monofilament - Gauge 0.3(9/0) 30cm on 6mm 3/8 Circle Spatula Double Armed Needle | Dozen |
| 139 | Porc-70 | Polyglycolic Acid Absorbable Braided Violet - Gauge 0.4(8/0) 45cm on 8mm 1/2 Circle Reverse Cutting Needle | Dozen |
| 140 | Pogr-71 | Polyglycolic Acid Absorbable Braided Violet - Gauge 0.4(8/0) 45cm on 8mm 1/2 Circle Round Bodied Needle | Dozen |
| 141 | Porc-80 | Polyglycolic Acid Absorbable Braided Violet - Gauge 2.0(3/0) 75cm on 26mm 1/2 Circle Reverse Cutting Needle | Dozen |
| 142 | Pogr-81 | Polyglycolic Acid Absorbable Braided Violet - Gauge 2.0(3/0) 75cm on 26mm 1/2 Circle Round Bodied Needle | Dozen |
| 143 | Pogc-72 | Polyglycolic Acid Absorbable Braided Violet -Gauge 0.7(6/0) 30 cm on 12 mm 1/2 Circle Cutting Taper Needle | Dozen |
| 144 | Pogr-73 | Polyglycolic Acid Absorbable Braided Violet -Gauge 0.7(6/0) 30 cm on 12 mm 1/2 Circle Round Bodied Needle | Dozen |

| SN | Base Code | Description | Unit |
|-----|-----------|--|-------|
| 145 | Porc-74 | Polyglycolic Acid Absorbable Braided Violet -Gauge 1.0(5/0) 45 cm on 13 mm ½ Circle Reverse Cutting Needle | Dozen |
| 146 | Pogr-75 | Polyglycolic Acid Absorbable Braided Violet -Gauge 1.0(5/0) 45 cm on 13 mm ½ Circle Round Bodied Needle | Dozen |
| 147 | Pogr-77 | Polyglycolic Acid Absorbable Braided Violet -Gauge 1.5(4/0) 75 cm on 15 mm ½ Circle Round Bodied Needle | Dozen |
| 148 | Porc-78 | Polyglycolic Acid Absorbable Braided Violet -Gauge 1.5(4/0) 75 cm on 15 mm ½ Circle Reverse Cutting Taper Needle | Dozen |
| 149 | Pogr-83 | Polyglycolic Acid Absorbable Braided Violet -Gauge 3.0(2/0) 75 cm on 27 mm ½ Circle Round Bodied Needle | Dozen |
| 150 | Porc-84 | Polyglycolic Acid Absorbable Braided Violet -Gauge 3.0(2/0) 75 cm on 27 mm 1/2 Circle Reverse Cutting Needle | Dozen |
| 151 | Porc-85 | Polyglycolic Acid Absorbable Braided Violet -Gauge 3.5(0) 75 cm on 48 mm 1/2 Circle Reverse Cutting Needle | Dozen |
| 152 | Pogr-86 | Polyglycolic Acid Absorbable Braided Violet -Gauge 3.5(0) 75 cm on 48 mm 1/2 Circle Round Bodied Needle | Dozen |
| 153 | Pogc-88 | Polyglycolic Acid Absorbable Braided Violet -Gauge 4.0(1) 75 cm on 45 mm ½ Circle Cutting Taper Heavy Needle | Dozen |
| 154 | Pogr-89 | Polyglycolic Acid Absorbable Braided Violet -Gauge 4.0(1) 75 cm on 45 mm ½ Circle Round Bodied Needle | Dozen |
| 155 | Pogc-91 | Polyglycolic Acid Absorbable Braided Violet -Gauge 5.0(2) 75cm on 40mm ½ Circle Cutting Tapper Needle | Dozen |
| 156 | Pogr-92 | Polyglycolic Acid Absorbable Braided Violet -Gauge 5.0(2) 75cm on 40mm ½ Circle Round Bodied Needle | Dozen |
| 157 | Pumb-70 | Pump Breast Manual Plastic -30ml | Each |

| SN | Base Code | Description | Unit |
|-----|-----------|--|-------|
| 158 | Tubr-70 | Rectal Tube Rubber With Terminal Size - 14CH | Each |
| 159 | Tubr-71 | Rectal Tube Rubber With Terminal Size - 18CH | Each |
| 160 | Tubr-73 | Rectal Tube Rubber With Terminal Size - 22CH | Each |
| 161 | Tubr-75 | Rectal Tube Rubber With Terminal Size - 26CH | Each |
| 162 | Scal-70 | Scalp Vein Winged Infusion Set - 23G | 100 |
| 163 | Scal-71 | Scalp Vein Winged Infusion Set - 25G | 100 |
| 164 | Spne-75 | Spinal Needle 10cm-25G | Each |
| 165 | Spne-76 | Spinal Needle 10cm-26G | Each |
| 166 | Spne-71 | Spinal Needle 6cm-21G | Each |
| 167 | Spne-72 | Spinal Needle 8cm-22G | Each |
| 168 | Spne-73 | Spinal Needle 8cm-23G | Each |
| 169 | Spne-74 | Spinal Needle 8cm-24G | Each |
| 170 | Blad-70 | Surgical Scalpel Blade - No.10 | 100 |
| 171 | Blad-72 | Surgical Scalpel Blade - No.12 | 100 |
| 172 | Blad-75 | Surgical Scalpel Blade - No.15 | 100 |
| 173 | Blad-77 | Surgical Scalpel Blade - No.20 | 100 |
| 174 | Blad-79 | Surgical Scalpel Blade - No.22 | 100 |
| 175 | Blad-81 | Surgical Scalpel Blade - No.24 | 100 |
| 176 | Abhe-70 | Surgical Absorbable Hemostat -1" x 2" | Dozen |
| 177 | Abhe-71 | Surgical Absorbable Hemostat -2" x 4" | Dozen |
| 178 | Abhe-72 | Surgical Absorbable Hemostat -4" x 4" | Dozen |
| 179 | Abhe-73 | Surgical Absorbable Hemostat -4" x 8" | Dozen |
| 180 | Syri-80 | Syringe (Disposable) - 10ml with Needle21G | 100 |
| 181 | Syri-82 | Syringe (Disposable) - 20ml with Needle21G | 50 |
| 182 | Syri-77 | Syringe (Disposable) - 3ml with Needle21G | 100 |
| 183 | Syri-83 | Syringe (Disposable) - 50ml with Needle21G | 25 |
| 184 | Syrn-78 | Syringe (Disposable) - 5ml with Needle21G | 100 |
| 185 | Syri-74 | Syringe Dental of metal 1.8ml | 100 |
| 186 | Syri-76 | Syringe Dental of metal 2.5ml | 100 |
| 187 | Syri-73 | Syringe Insulin (Disposable) - 1ml on 6mm with Fixed Needle30G | 100 |
| 188 | Tubt3-01 | T-Tube - No. 14G | Each |

| SN | Base Code | Description | Unit |
|-----|-----------|---|------|
| 189 | Tubt3-02 | T- Tube - No. 16G | Each |
| 190 | Spaw-70 | Tongue Depressor (Spatula) Wooden | 50 |
| 191 | Tdb3-01 | Tourniquet of Double Belt | Each |
| 192 | Trac-70 | Tracheostomy Tube 3.0 mm with 90 curvature armored with low Pressure Cuff Universal inflation funnel and pilot balloon | Each |
| 193 | Tram-71 | Tracheostomy Tube 3.5 mm with 90 curvature armored with low Pressure Cuff Universal inflation funnel and pilot balloon metallic | Each |
| 194 | Trac-72 | Tracheostomy Tube 4.5 mm with 90 curvature armored with low Pressure Cuff Universal inflation funnel and pilot balloon | Each |
| 195 | Tram-73 | Tracheostomy Tube 5.0 mm with 90 curvature armored with low Pressure Cuff Universal inflation funnel and pilot balloon metallic | Each |
| 196 | Trac-74 | Tracheostomy Tube 6.0 mm with 90 curvature armored with low Pressure Cuff Universal inflation funnel and pilot balloon | Each |
| 197 | Tram-75 | Tracheostomy Tube 7.0 mm with 90 curvature armored with low Pressure Cuff Universal inflation funnel and pilot balloon metallic | Each |
| 198 | Trac-76 | Tracheostomy Tube 9.0 mm with 90 curvature armored with low Pressure Cuff Universal inflation funnel and pilot balloon | Each |
| 199 | Umcl-70 | Umbilical Clamp Sterile - 5.3cm | Each |
| 200 | Umct-70 | Umbilical Cord Tie - 6mmx24.5m | Each |
| 201 | Urtu-70 | Ureteric Tubes -5mm-6mm,75cm | Each |
| 202 | Urba-70 | Urine Collecting Bag PVC Latex Product - 1000ml | Each |
| 203 | Urba-71 | Urine Collecting Bag PVC Latex Product - 2000ml | Each |
| 204 | Wird-71 | Wire Dental No. 26 | Each |
| 205 | Wird-70 | Wire Dental No. 25 | Each |

| SN | Base Code | Description | Unit |
|---------------------------------------|-----------|--|------|
| 4. LIST OF MEDICAL EQUIPMENT | | | |
| 4.1. ROUTINE MEDICAL EQUIPMENT | | | |
| 1 | Uran-90 | Analyzer - Urine | Each |
| 2 | Ccan-91 | Analyzer - Clinical Chemistry, Fully Automated | Each |
| 3 | Ccan-90 | Analyzer - Clinical Chemistry, Semi Automated | Each |
| 4 | Hema-90 | Analyzer - Hematology, 3 Differential | Each |
| 5 | Hema-91 | Analyzer - Hematology, 5 Differential | Each |
| 6 | Anem-90 | Anesthesia Machine | Each |
| 7 | Anos-90 | Anoscope-Metal | Each |
| 8 | Audi-90 | Audiometer | Set |
| 9 | Refa-90 | Auto refractor | Each |
| 10 | Bedi-91 | Bed - ICU, Electrical and hydraulic | Each |
| 11 | Bedp-91 | Bed - Patient, Fowler, Adult | Each |
| 12 | Bedi-90 | Bed - Patient, ICU, Pediatric | Each |
| 13 | Panb-90 | Bed Pan-Adult, Male, Stainless Steel | Each |
| 14 | Bedp-90 | Bed-infant/neonate | Each |
| 15 | FNAb-90 | Biopsy-FNA | Each |
| 16 | Cutb-90 | Bone-Cutter | Each |
| 17 | Boms-90 | Bowel-Mixing with Spatula | Each |
| 18 | Boss-90 | Bowl-With Stand, Stainless Steel, 300ml | Each |
| 19 | Brmo-90 | Bracket - Metallic, Orthodontic (28/Box) | Box |
| 20 | Bura-90 | Burner-Alcohol | Each |
| 21 | Ceng-90 | Centrifuge-General Purpose, Electrical | Each |
| 22 | Cenh-90 | Centrifuge-Haematocrit, Electrical | Each |
| 23 | Cenm-90 | Centrifuge-Manual, 4 X15 ml | Each |
| 24 | Wirc-90 | Cerclage-Wire, 10 meter length | pack |
| 25 | Cefk-90 | Cervical-Fixation, kit, lateral mass | Each |
| 26 | Ceok-90 | Cervical-Occipital, kit | Each |
| 27 | Clbs-90 | Clamp - Bowel, stainless steel | Each |
| 28 | Tubec-90 | Clamp-Tube | Each |
| 29 | Coex--90 | Couch-Examination | Each |
| 30 | Coeg-90 | Couch-Examination, Gynaecological | Each |

| SN | Base Code | Description | Unit |
|----|-----------|---|------|
| 31 | Cryu-90 | Cryotherapy-Unit | Each |
| 32 | Cysr-90 | Cystoscope-Rigid | Each |
| 33 | Dehp-90 | Dental - High and Low speed hand piece | Each |
| 34 | Mide-90 | Dental Examination Mirror | Each |
| 35 | Dere-90 | Dermatome-Electrical, Adult and pediatric | Each |
| 36 | Diss-91 | Dish-Stainless Steel, Large , Round,20L | Pack |
| 37 | Culd-90 | Dispenser - Culture | Each |
| 38 | Anke-90 | Disposable Epidural - Spinal Combined Anesthesia Kit | kit |
| 39 | Watd-92 | Distiller - water, 20 L/hr. | Each |
| 40 | Disw-91 | Distiller-Water, 12 L/ hr. | Each |
| 41 | Disw-93 | Distiller-Water, 30 L/hr. | Each |
| 42 | Disw-90 | Distiller-Water, 4 L/hr. | Each |
| 43 | Drid-90 | Drill-Electrical, Dental | Each |
| 44 | Drim-90 | Drill-Implant with all standard type, size and quantity | Each |
| 45 | Drne-90 | Drill-Neuro surgical, Electrical | Each |
| 46 | Drnm-90 | Drill-Neuro surgical, Manual | Each |
| 47 | Drus-92 | Drum - Sterilizer, Large, 27x16.5 cm | Each |
| 48 | Drus-90 | Drum - Sterilizer, Small, 12 x 10 cm | Each |
| 49 | Drud-92 | Drum-Dressing, Round Schimmelbush, 1340x240mm | Each |
| 50 | Drud-90 | Drum-Dressing, Round Schimmelbush, 150x150mm | Each |
| 51 | Drud-91 | Drum-Dressing, Round Schimmelbush, 270x165mm | Each |
| 52 | Druk-90 | Drum-Konrich, 240xh240mm | Each |
| 53 | Drus-91 | Drum-Sterilizer, Medium, 18x12 cm | Each |
| 54 | Carg-90 | ECG Machine | Each |
| 55 | Encg-90 | EEG Machine | Each |
| 56 | Elsu-90 | Electrosurgical Unit | Each |
| 57 | Elde-90 | Elevator- dental, set with all standard type, size and quantity | set |
| 58 | Enem-90 | Enema Can - 2L and 1L | Pack |
| 59 | Esrs-90 | ESR Stand-Stainless Steel Or Plastic, 20, 30 and 60 Minute | Pack |
| 60 | Egog-90 | Eye Google-Indirect Vent, Clear Opycarbonate | Each |

| SN | Base Code | Description | Unit |
|----|-----------|--|------|
| 61 | Eguv-90 | Eye google-UV protective | Each |
| 62 | Feta-90 | Fetoscope- Aluminium | Each |
| 63 | Fibg-90 | Fiber-Glass with all standard type, size and quantity, 5 and 10 cm | Pack |
| 64 | Mesh-90 | Flexible titanium mesh with unicortical self-tapping screws 0.6 mm mesh cutting tool | Each |
| 65 | Foba-90 | Forceps - Babcock, 155mm, 6" | Each |
| 66 | Foad-90 | Forceps - Adson, Baby, Dissecting 140mm, 5 1/2" | Each |
| 67 | Foal-90 | Forceps - Allis Baby 120mm 4 3/4" | Each |
| 68 | Foar-90 | Forceps - Artery (Mosquito) Large Curved | Each |
| 69 | Fobk-90 | Forceps - Backhaus Kocher Towel Clamp 130mm 5 1/8" | Each |
| 70 | Fomw-90 | Forceps - Delivery (Mid Wifery Forceps) | Each |
| 71 | Fode-90 | Forceps - Dental, Lower | Each |
| 72 | Fodi-90 | Forceps - Dissecting, Cushing, 180mm 7" | Each |
| 73 | Foed-90 | Forceps - Extraction, Dental | Each |
| 74 | Fodb-90 | Forceps - Grasping, Tissue, De Bakey, 150mm 6" | Each |
| 75 | Fohm-90 | Forceps - Halstead mosquito, curved 125mm 5" | Each |
| 76 | Fola-90 | Forceps - Lahey, dissecting, 190mm 7 1/2" | Each |
| 77 | Folu-90 | Forceps - Lung, dissecting, 230mm 9" | Each |
| 78 | Form-90 | Forceps - Majeles | Each |
| 79 | Fomi-90 | Forceps - Mixer dissecting, 220mm 8 3/4" | Each |
| 80 | Fohb-90 | Forceps - Mosquito, (Hartmann), Baby, Curved 95mm 3 3/4" | Each |
| 81 | Font-90 | Forceps - Non traumatic, dissecting, Cushing 180mm 7" | Each |
| 82 | Fopj-90 | Forceps - Pick Up, With Jar | Each |
| 83 | Fopn-90 | Forceps - Pin set (Tissue) Non Toothed | Each |
| 84 | Forh-90 | Forceps - Rankin, Haemostatic, curved 160mm 6 1/4" | Each |
| 85 | Fosb-90 | Forceps - Satinsky, Vessel, Baby, Clamp 150mm 6" | Each |
| 86 | Fosd-90 | Forceps - Sponge, With Drum | Each |
| 87 | Foti-90 | Forceps - Tissue 169mm 6 1/4" | Each |
| 88 | Foam-90 | Forceps-Artery, Mosquito, Straight, 14.5 Cm | Each |

| SN | Base Code | Description | Unit |
|-----|-----------|---|------|
| 89 | Foex-90 | Forceps-Extraction with all standard type, size and quantity | set |
| 90 | Foep-90 | Forceps-Extraction, pediatric set with all standard type, size and quantity | set |
| 91 | Fofp-90 | Forceps-Fine Point, Stainless Steel, Straight | Each |
| 92 | Fogb-90 | Forceps-Gall bladder | Each |
| 93 | Fogd-90 | Forceps-Gallstone, Dins jar | Each |
| 94 | Foga-90 | Forceps-Green Armitage | Each |
| 95 | Foha-90 | Forceps-Haemorrhoid | Each |
| 96 | Fohp-90 | Forceps-Haemostatic , Pean Curved 14 Cm | Set |
| 97 | Fohe-90 | Forceps-Henney clamp SS curved 21/24cm | Each |
| 98 | Foko-90 | Forceps-Kocher, Straight, 16cm | Each |
| 99 | Foma-90 | Forceps-Majeles | Each |
| 100 | Fore-90 | Forceps-Rectal, Assorted Size | Each |
| 101 | Foro-90 | Forceps-Rongeur | Each |
| 102 | Fost-90 | Forceps-Schroeder Tenaculum, Straight, 25 Cm STAINLESS STEEL | Each |
| 103 | Fosh-90 | Forceps-Sponge Holding, Forester, Serrated Curved, 25 Cm | Each |
| 104 | Icep-90 | Freezer-Ice Pack | Each |
| 105 | Gals-90 | Galipot-Stainless Steel, 100ml | Each |
| 106 | Gitf-90 | Gillis tissue forceps 160mm 6 ¼" | Pach |
| 107 | Gluc-90 | Glucometer | Each |
| 108 | Hamr-90 | Hammer - Reflex, 20cm | Each |
| 109 | Hadc-90 | Hammer-Dental with chisel | Each |
| 110 | Hasc-90 | Handle-Scalpel No. 7 and 15 Stainless Steel | pack |
| 111 | Habo-90 | Hatch Box | Each |
| 112 | Hers-90 | Hematocrit Reading Scale | Each |
| 113 | Hemc-90 | Hemocytometer | Each |
| 114 | Hemg-90 | Hemoglobinometer | Each |
| 115 | Hocn-90 | Holder - Castroviejo, Needle, 140mm 5 ½" | Each |
| 116 | Hukb-90 | Humby-Knife with Blade | Each |
| 117 | Inla-90 | Incubator-Laboratory, 40L | Each |

| SN | Base Code | Description | Unit |
|-----|-----------|---|------|
| 118 | Inla-91 | Incubator-Laboratory, 60L | Each |
| 119 | Inpp-90 | Infusion-pump, Perfuser | Each |
| 120 | Ivst-90 | IV Stand | Each |
| 121 | Jafp-90 | Jar - Forceps, Pickup | Each |
| 122 | Kera-90 | Keratometer, Automatic | Each |
| 123 | Kidn-90 | Kidney Dish-Stainless Steel | pack |
| 124 | Fiai-80 | Kit-First Aid | Kit |
| 125 | Kwi3-01 | K-wire 2.8 mm diameter with 50 mm length | Each |
| 126 | Phol-90 | LED phototherapy light | Each |
| 127 | Leno-90 | Lens-Aspheric, +20D for Indirect ophthalmoscopy | Each |
| 128 | Lenm-90 | Lens-Aspheric, +90D, +78D, for slit lamp microscope | Each |
| 129 | Leng-90 | Lens-Goinoscope; Goldman-3 Mirror/ | Each |
| 130 | Lent-90 | Lens-Trial | Each |
| 131 | Lhic-90 | Light - High intensive Cure | Each |
| 132 | Liem-90 | Light-Examination, Mobile | Each |
| 133 | Lfml-90 | Light-Forehead with magnifying loop | Each |
| 134 | Lioc-90 | Light-Operating, Ceiling | Each |
| 135 | Liom-90 | Light-Operating, Mobile | Each |
| 136 | Loop-90 | Loupe - Operating | Each |
| 137 | Mibl-90 | Microscope - Binocular, LED | Each |
| 138 | Milf-90 | Microscope - Laboratory, Fluorescence | Each |
| 139 | Mins-90 | Microscope-Neuro surgical | Each |
| 140 | Canm-90 | Monitor - Cardiorespiratory, Neonatal | Each |
| 141 | Pamo-90 | Monitor - Patient | Each |
| 142 | Femo-90 | Monitor-Fetal | Each |
| 143 | Nebu-90 | Nebulizer | Each |
| 144 | Nehk-90 | Needle Holder-Kal Needle Holder 14cm | Each |
| 145 | Nehm-90 | Needle Holder-Mayo Hegar, 20 Cm | Each |
| 146 | Odsf-90 | Odontoid screw fixation kit | Each |
| 147 | Omre-90 | Ommaya Reservoir kit | Each |
| 148 | Opib-90 | Ophthalmoscope - indirect, Binocular | Each |
| 149 | Ophd-90 | Ophthalmoscope-Direct | Each |

| SN | Base Code | Description | Unit |
|-----|-----------|--|--------|
| 150 | Otos-90 | Otoscope instruments, consultation instrument for ENT | Set |
| 151 | Oxco-90 | Oxygen Concentrator | Each |
| 152 | Oxyc-90 | Oxygen Cylinder With Different Size Resuscitator | Each |
| 153 | Oxfm-90 | Oxygen Flow Meter With Gauge And Humidifier | Each |
| 154 | Oxre-90 | Oxygen Regulator | Each |
| 155 | Esrp-90 | Pipette ESR | Each |
| 156 | Tip3-01 | Pipette Tip, 100-1000 IU. | pack |
| 157 | Pipg-90 | Pipette-Graduated, Glass, 10 ML | Each |
| 158 | Piwb-90 | Pipette-WBC Thomas | Each |
| 159 | Plca-90 | Plate-Calcaneus for 3.5 mm screw, 1.2mm x 70mm | Each |
| 160 | Plcl-90 | Plate-Clavicular, locking, safety | Each |
| 161 | POPc-90 | POP Cutter-Electrical | Each |
| 162 | Srip-90 | Power drill - Electrical | Each |
| 163 | oxip-90 | Pulse Oximeter: | Each |
| 164 | Brmp-90 | Pump-Breast, Manual | Each |
| 165 | rast-90 | Rack - Staining | Each |
| 166 | Rctf-90 | Rct Files /Reamers/ Broach | 8/Pack |
| 167 | Reim-90 | Resuscitator - Infant, Manual | Each |
| 168 | Reti-90 | Retinoscope | Each |
| 169 | Reko-90 | Retractor - Kocher, 240mm 9 ½" 80x42mm | Each |
| 170 | Dems-90 | Scalar-Dental Manual set with all standard type, size and quantity | Each |
| 171 | Wead-90 | Scale - Weight, Adult, Digital | Each |
| 172 | Bara-90 | Scale-Bath Room, Adult | Each |
| 173 | Bebt-90 | Scale-Beam Balance, Twin | Each |
| 174 | Blbd-90 | Scale-Blood Bag, Digital | Each |
| 175 | Wedc-90 | Scale-Weight, Digital, Child | Each |
| 176 | Wedi-90 | Scale-Weight, Digital, Infant | Each |
| 177 | Wema-91 | Scale-Weight, Mechanical, Adult | Each |
| 178 | Wemi-90 | Scale-Weight, Mechanical, Infant | Each |
| 179 | Scha-90 | Scalpel Handle No. 3 Stainless Steel | Each |
| 180 | Stis-90 | Scissor-Stitch, 17 Cm | Each |

| SN | Base Code | Description | Unit |
|-----|-----------|--|------|
| 181 | Stss-90 | Scissor-Straight, Stainless Steel, 14.5 Cm | Each |
| 182 | Tiss-90 | Scissor-Tissue, Curved, 20 Cm | Each |
| 183 | Umcs-90 | Scissor-Umbilical Cord Curved 135mm Stainless Steel | Each |
| 184 | Pats-90 | Screen - patient/bed | Each |
| 185 | Myos-90 | Screw Myoma | Each |
| 186 | Sclo-90 | Screw-lock, Safety 3.5 mm self-tapping | Each |
| 187 | Scpe-90 | Screw-Pedicle, fixation system, lumbar and thoracic | Each |
| 188 | Ampu-90 | Set - Amputation | Set |
| 189 | Arth-90 | Set - Arthroscopy | Each |
| 190 | Cerb-90 | Set - Cervical Biopsy | Set |
| 191 | Clal-90 | Set - Clalazione | Set |
| 192 | Eent -90 | Set - Diagnostic, EENT | Set |
| 193 | Dicu-90 | Set – Dilation & Curettage | Set |
| 194 | Exig-90 | Set - Examination Instrument, Gynecology | Set |
| 195 | Eyis-90 | Set - instrument, Eye minor surgery | Set |
| 196 | Vasi-90 | Set - Instrument, Vasectomy | set |
| 197 | Mvas-90 | Set - MVA | Set |
| 198 | Nege-90 | Set - Nephrotomy/Nephrostomy/Nephrolithotomy/ pyelotomy/ General Nephrectomy with Laparotomy | Set |
| 199 | Plbn-90 | Set - Pleural Biopsy Needle | Set |
| 200 | Rupi-90 | Set - Rush Pin | Each |
| 201 | Orm3-01 | Set- Oral and maxillofacial surgery | Set |
| 202 | Orw3-01 | Set- Orthodontic wire | set |
| 203 | Revi-90 | Set- Vitreous -Retina | Each |
| 204 | Ora3-01 | Set-Air Ways, Oropharyngeal | Set |
| 205 | Blpa-90 | Set-Angled blade Plate | Each |
| 206 | Bio3-01 | Set-Biopsy, incision | Each |
| 207 | Bio4-01 | Set-Biopsy, punch | Set |
| 208 | Retb-90 | Set-Bookwalter retractor | Each |
| 209 | Budf-90 | Set-Budji female | Each |
| 210 | Budm-90 | Set-Budji male | Each |
| 211 | Buho-90 | Set-Burr hole | Each |

| SN | Base Code | Description | Unit |
|-----|-----------|---|------|
| 212 | Hisc-90 | Set-Cannulated hip screw | Each |
| 213 | Cata-90 | Set-Cataract | Each |
| 214 | Chat-91 | Set-Cervical halo traction, adult | Each |
| 215 | Chat-90 | Set-Cervical halo traction, pediatrics | Each |
| 216 | spic-90 | Set-Cervical spinal | Each |
| 217 | Ches-90 | Set-Chest | Each |
| 218 | Chol-90 | Set-Cholecystectomy | Set |
| 219 | Cran-90 | Set-Craniotomy | Each |
| 220 | Spvc-90 | Set-Cusco Vaginal Speculum | Set |
| 221 | Fod3-01 | Set-Delivery Forceps | Set |
| 222 | Exd3-01 | Set-Dental Extraction,Adult with all standard type, size and quantity | Set |
| 223 | Indr-90 | Set-Dressing Instrument | Set |
| 224 | Naie-90 | Set-Ender Nail | Each |
| 225 | Endo-90 | Set-Endodontics | set |
| 226 | Enuc-90 | Set-Enucleation | Set |
| 227 | Epid-90 | Set-Epidural | Each |
| 228 | Epvc-90 | Set-Episiotomy/Perineal/Vaginal Cervical | Set |
| 229 | Evis-90 | Set-Evisceration | Set |
| 230 | Fixe-90 | Set-External fixator | Each |
| 231 | Sueb-90 | Set-Eye surgery, basic | Each |
| 232 | Face-90 | Set-Facetectomy | Each |
| 233 | Refb-90 | Set-Foreign Body Removal | Set |
| 234 | Ortg-90 | Set-General Orthopedics | Each |
| 235 | Haem-90 | Set-Haemorrhoidectomy | Set |
| 236 | Hene-90 | Set-Head And Neck | Each |
| 237 | Himh-90 | Set-Hip, hemiarthroplasty | Each |
| 238 | Hyst-90 | Set-Hysterectomy | Each |
| 239 | Ind3-01 | Set-Incision And Drainage | Set |
| 240 | Csa3-01 | Set-Instrument,Abdominal, Cesarean Section | Set |
| 241 | Laa3- 01 | Set-Instrument,Abdominal, Laparotomy | Set |
| 242 | Dre3-02 | Set-Instrument, Dressing, Large | Set |
| 243 | Dre3-01 | Set-Instrument, Dressing, Small | Each |

| SN | Base Code | Description | Unit |
|-----|-----------|--|------|
| 244 | Min3-01 | Set-Instrument, Minor | Set |
| 245 | Obs3-01 | Set-Instrument, Obstetrical | Set |
| 246 | Maj3-01 | Set-Instrument, Surgery, Major | Set |
| 247 | Tra3-01 | Set-Instrument, Tracheostomy | Set |
| 248 | Wir3-01 | Set-k wire, complete | Each |
| 249 | Artk-90 | Set-knee, arthroplasty | Each |
| 250 | Lacr-90 | Set-Lacrimal | Set |
| 251 | Lam3-01 | Set-Laminectomy | Each |
| 252 | Lapa-91 | Set-Laparotomy | Set |
| 253 | Lapa-90 | Set-Laparotomy, Infant | Set |
| 254 | Fra3-03 | Set-Large fragment | Each |
| 255 | Lara-90 | Set-Laryngoscope, Adult | Set |
| 256 | Larp-90 | Set-Laryngoscope, Pediatric | Each |
| 257 | Lesu-90 | Set-Lead surgery, eye | Set |
| 258 | InL3-01 | Set-Locking, intramedullary nail without c arm | Each |
| 259 | inlo-01 | Set-Loop Insertion | Set |
| 260 | Vilo-90 | Set-Low vision | Set |
| 261 | Lupu-90 | Set-Lumbar Puncture | Set |
| 262 | Mas3-01 | Set-Mastectomy, simple | Each |
| 263 | Udb3-01 | Set-Metallic ureteral dialator;bougie nage | Each |
| 264 | Mns3-01 | Set-Micro neuro surgery | Each |
| 265 | Midw-90 | Set-Midwifery | Set |
| 266 | Fra3-02 | Set-Mini fragment | Each |
| 267 | Misu-90 | Set-Minor Surgical | Set |
| 268 | Napf-90 | Set-Nail, PFNA | Set |
| 269 | Nati-91 | Set-Nail, tibia | Set |
| 270 | Nas3-01 | Set-Nasal | Each |
| 271 | Ocup-90 | Set-Oculoplastic | Set |
| 272 | Panc-90 | Set-Pancreatectomy | Set |
| 273 | Padu-90 | Set-pancreaticoduodenectomy | Set |
| 274 | PCNL-90 | Set-PCNL | Each |
| 275 | Pelv-90 | Set-Pelvic | Set |

| SN | Base Code | Description | Unit |
|-----|-----------|---|------|
| 276 | Forp-90 | Set-Pickup Forceps With Jar | Each |
| 277 | Plac-90 | Set-plate, locking compression | Each |
| 278 | Plar-90 | Set-plate, reconstruction | Each |
| 279 | Pnt3-01 | Set-Pneumatic tourniquet, digital | Each |
| 280 | PPVS-90 | Set-PPV | Set |
| 281 | Pros-90 | Set-Prostatectomy | Each |
| 282 | Recs-90 | Set-Rectal | Each |
| 283 | Rexp-90 | Set-Renal exploration | Set |
| 284 | Rhin-90 | Set-Rhinoplasty | Set |
| 285 | Scb3-01 | Set-Screw, broken | Each |
| 286 | Scrc-91 | Set-Screw, cannulated | Each |
| 287 | Arts-90 | Set-Shoulder, Arthroplasty | Each |
| 288 | Skig-90 | Set-Skin Graft | Set |
| 289 | Fra3-01 | Set-Small fragment | Each |
| 290 | Sple-90 | Set-Splenectomy | Set |
| 291 | Spli-90 | Set-Splints | Set |
| 292 | Stap-90 | Set-Staple | Set |
| 293 | Ster-90 | Set-Stereopsis | Set |
| 294 | Stra-90 | Set-Strabismus | Set |
| 295 | Peds-90 | Set-Surgical, Pediatric | Set |
| 296 | Lums-90 | Set-thoraco-lumbar spine | Set |
| 297 | Thor-90 | Set-Thoracotomy | Set |
| 298 | Tons-90 | Set-Tonsillectomy | Set |
| 299 | Arth-91 | Set-Total hip, Arthroplasty | Each |
| 300 | Trab-90 | Set-Trab | Set |
| 302 | Tymp-90 | Set-Tympanoplasty | Set |
| 303 | Vavs-90 | Set-Varicose vein stripping | Set |
| 304 | Vasc-90 | Set-Vascular | Set |
| 305 | Vasc-91 | Set-Vascular clamp | Each |
| 306 | Vevf-90 | Set-Vesicovaginal fistula | Set |
| 307 | Srct-90 | Shaker - Rotary, Clinical Testing | Each |
| 308 | Slla-90 | Slit Lamp-Automatic with Goldman applanation tonometer and teaching scope | Each |

| SN | Base Code | Description | Unit |
|-----|-----------|--|------|
| 309 | Spea-90 | Speculum-Anal | Each |
| 310 | Spem-92 | Speculum-eye, metal- large | Each |
| 311 | Spnk-90 | Speculum-Nasal, Killians | Each |
| 312 | Spev-92 | Speculum-Vaginal, Large | Set |
| 313 | Spev-91 | Speculum-Vaginal, Medium | Set |
| 314 | Spev-90 | Speculum-Vaginal, Small | Set |
| 315 | Spai-90 | Sphygmomanometer-Aneroid, Infant | Each |
| 316 | Spap-90 | Sphygmomanometer-Aneroid, Pediatric | Each |
| 317 | Sada-90 | Sphygmomanometer-Aneroid-Digital, Adult | Each |
| 318 | Spda-90 | Sphygmomanometer-Digital, Adult | Each |
| 319 | Spdi-90 | Sphygmomanometer-Digital, Infant/Neonatal | Each |
| 320 | Spdp-90 | Sphygmomanometer-Digital, Pediatric | Each |
| 321 | Stei-90 | Steinman pin 3 mm diameter by 150mm length | Each |
| 322 | Stha-90 | Sterilizer - Hot Air, 125L | Each |
| 323 | Ssgl-90 | Sterilizer - Steam, Glass Lid | Each |
| 324 | Sstt-90 | Sterilizer - Steam, Tabletop, 25liter | Each |
| 325 | Stea-90 | Stethoscope - Adult and Pediatric | Each |
| 326 | Sten-90 | Stethoscope - Neonatal | Each |
| 327 | Step-90 | Stethoscope-Pediatric | Each |
| 328 | Sted-90 | Straight Elevator- dental, set with all standard type, size and quantity | set |
| 329 | Smes-90 | Suction Machine-Electrical, Surgical | Each |
| 330 | Surt-90 | Surgical Teflon | Each |
| 331 | Toeh-90 | Table-Operating, Electro-Hydraulic | Each |
| 332 | Thcd-90 | Thermometer-Clinical, Digital | Each |
| 333 | Topm-90 | Tourniquet - Pneumatic, Manual | Each |
| 334 | Trai-90 | Tray-Instrument, 35x30x3.5 Cm [With Cover] | Each |
| 335 | Tiid-90 | Tray-Instrument, Impression dental, set | Each |
| 336 | Troe-90 | Trolley - Emergency | Each |
| 337 | Tmha-90 | Trolley - Mortuary Height Adjustable | Each |
| 338 | Trpr-90 | Trolley - Patient Record | Each |
| 339 | Tror-90 | Trolley - Resuscitation | Each |
| 340 | Trcl-90 | Trolley-Clean Linen | Each |

| SN | Base Code | Description | Unit |
|---------------------------------------|-----------|--|------|
| 341 | Trdl-90 | Trolley-Dirty Linen | Each |
| 342 | Trod-90 | Trolley-Dressing, | Each |
| 343 | Trgp-90 | Trolley-General Purpose | Each |
| 344 | Trok-90 | Trolley-Kitchen | Each |
| 345 | Uldf-90 | Ultrasound-Doppler, Fetal | Each |
| 346 | Ugcd-90 | Ultrasound-General Purpose, Color Doppler | Each |
| 347 | Uret-90 | Ureteronephroscope | Each |
| 348 | Vaee-90 | Vacuum Extractor, Electrical | Each |
| 349 | Vaem-90 | Vacuum Extractor, Manual | Each |
| 350 | Vent-90 | Ventriculostomy kit with drainage tubes and collection bags | Each |
| 351 | Wari-90 | Warmer - Radiant, Infant | Each |
| 352 | Warf-90 | Warmer-Fluid/Blood | Each |
| 353 | Wasb-90 | Wash Basin | Each |
| 354 | Waff-90 | Wheel chair - Adult, foldable, Foot rest Adjustable | Each |
| 355 | Wire-90 | Winter root Elevator with all standard type, size and quantity | set |
| 356 | Wirc-91 | Wire-Cutter small and large size | Each |
| 357 | Xrdd-90 | X-Ray-Dental, Digital, with RVG | Each |
| 358 | Yrpl-90 | Y-Reconstruction plate, large | Each |
| 4.2. CAPITAL MEDICAL EQUIPMENT | | | |
| 1 | Anbg -90 | Analyzer - Blood Gas | Each |
| 2 | Anac-90 | Analyzer – Coagulation | Each |
| 3 | Aele-90 | Analyzer - Electrolyte | Each |
| 4 | Aeli-90 | Analyzer - Elisa | Each |
| 5 | Afcc-90 | Analyzer – Flow cytometer, CD4 | Each |
| 6 | Anas-90 | Analyzer - Spectrophotometer | Each |
| 7 | Arga-90 | Argon laser | Each |
| 8 | Cenb-90 | Centrifuge - Refrigerated, Blood Bank | Each |
| 9 | Cryo-90 | Cryomachine (Glaucoma probe, Retina probe) | Each |
| 10 | Ctsc-90 | CT Scan | Each |
| 11 | Defi-90 | Defibrillator | Each |
| 12 | Denu-90 | Dental Unit | Each |

| SN | Base Code | Description | Unit |
|----|-----------|---|------|
| 13 | Diam-90 | Dialysis Machine | Each |
| 14 | Diol-90 | Diode laser | Each |
| 15 | Eegm-90 | EEG Machine | Each |
| 16 | Enbr-90 | Endoscope - Bronchoscope, Rigid | Each |
| 17 | Enco-90 | Endoscope - Colonoscope | Each |
| 18 | Encp-90 | Endoscope - Colposcope | Each |
| 19 | Ency-90 | Endoscope - Cystoscope | Each |
| 20 | Eneu-90 | Endoscope – Endo-urology set | Each |
| 21 | Enhy-90 | Endoscope - Hysteroscope | Each |
| 22 | Enla-90 | Endoscope - Laparoscope | Each |
| 23 | Enpr-90 | Endoscope - Proctoscope/Rectoscope | Each |
| 24 | Ensi-90 | Endoscope - Sigmoidoscope | Each |
| 25 | Envl-90 | Endoscope - Video Laryngoscope | Each |
| 26 | Foru-90 | Forceps – Ureterorenoscope | Each |
| 27 | Frep-90 | Freezer - Plasma | Each |
| 28 | Frev-90 | Freezer - Vaccine | Each |
| 29 | Func-90 | Fundus Camera | Each |
| 30 | Gene-90 | Gene-Expert | Each |
| 31 | Geel-90 | Generator - Electric | Each |
| 32 | Genh-90 | Generator - Harmonic | Each |
| 33 | Hdvi-90 | HD video system with camera | Each |
| 34 | Iccm-90 | Ice Cube Machine - Pork's Automated | Each |
| 35 | Icfm-90 | Ice Flaker Machine - Pork's Automated | Each |
| 36 | Incn-90 | Incubator - Newborn | Each |
| 37 | Inst-90 | Inspissator -TB Culture Preparatory | Each |
| 38 | Stds-90 | Instrument - Sterilizer /Disinfector | Each |
| 39 | Laum-90 | Laundry Machine | Each |
| 40 | Lith-90 | Lithotripter | Each |
| 41 | Mcil-90 | Microscope - Inverted Light | Each |
| 42 | Mioe-90 | Microscope - Operating, Eye with TV monitor and observing scope | Each |
| 43 | Mitm-90 | Microscope - TB and Malaria | Each |
| 44 | Mivc-90 | Microscope - with Video Camera | Each |

| SN | Base Code | Description | Unit |
|----|-----------|---|------|
| 45 | Meto-90 | Microscope: Eye Operating with TV monitor and observing scope | Each |
| 46 | Mira-90 | Microtome - Rotary, Fully Automatic | Each |
| 47 | Mirm-90 | Microtome - Rotary, Manual | Each |
| 48 | Micv-90 | Microtome - Vibrating | Each |
| 49 | Mopc-90 | Monitor - Patient, Central | Each |
| 50 | Mrim-90 | MRI Machine | Each |
| 51 | Octm- 90 | OCT machine | Each |
| 52 | Pcrm-90 | PCR Machine - Thermal Cycler | Each |
| 53 | Perk-90 | Perimetry - kinetic | Each |
| 54 | Pers-90 | Perimetry - Static | Each |
| 55 | Spec-90 | PET/SPECT | Each |
| 56 | Pham-90 | Phaco Machine | Each |
| 57 | Poom-90 | Portable operating microscope | Each |
| 58 | Rala -90 | Radiotherapy - Linear Accelerator | Each |
| 59 | Refa -90 | Refractometer - Automated | Each |
| 60 | Refb 90 | Refrigerator - Blood Bank | Each |
| 61 | Refg-90 | Refrigerator - General Purpose | Each |
| 62 | Refl-90 | Refrigerator - Laboratory | Each |
| 63 | Refs-90 | Refrigerator - Solar Direct Drive | Each |
| 64 | Refv-90 | Refrigerator - Vaccine | Each |
| 65 | staa -90 | Slide Stainer - Cytology/Histology,Auto | Each |
| 66 | Stel-90 | Sterilizer - Chemical, H2O2, Low Temperature | Each |
| 67 | Steh-90 | Sterilizer - Hot Air | Each |
| 68 | Stes- 90 | Sterilizer - Steam, Horizontal, Motorized Door | Each |
| 69 | Sttm-90 | Stress Testing Machine | Each |
| 70 | Thir-90 | Therapy - Infrared Rays | Each |
| 71 | Trea 90 | Treadmill | Each |
| 72 | Seal-90 | Tube Sealer | Each |
| 73 | Ultc-90 | Ultrasound - Color Doppler | Each |
| 74 | Ultg-90 | Ultrasound - Ob/Gyn | Each |
| 75 | Ulto-90 | Ultrasound - Ophthalmic | Each |
| 76 | Ultr-90 | Ultrasound - Therapy | Each |

| SN | Base Code | Description | Unit |
|----|-----------|---|------|
| 77 | Venm-90 | Ventilator - ICU, Mechanical | Each |
| 78 | Xfcd-90 | X-Ray - Fluoroscopy, C-Arm , Digital | Each |
| 79 | Xrfd-90 | X-Ray - Fluoroscopy, Digital | Each |
| 80 | Xrmd-90 | X-Ray - Mammography, Digital | Each |
| 81 | Xrrd 90 | X-Ray - Radiography With Fluoroscopy, Digital | Each |
| 82 | Xrad -90 | X-Ray - Radiography, Digital | Each |
| 83 | Xrrh-90 | X-Ray - Radiography, Hybrid | Each |
| 84 | Xrmd-91 | X-Ray - Radiography, Mobile, Digital | Each |
| 85 | Radp-90 | X-ray- Dental Panoramic | Each |
| 86 | Xrdc-90 | X-Ray -Dental, Cephalometric | Each |
| 87 | Yagl-90 | YAG laser | Each |

| SN | Base Code | Description | Unit |
|--------------------------------------|-----------|---|-------|
| 5. HEALTH PROGRAM COMMODITIES | | | |
| 5.1. ARV PHARMACEUTICALS | | | |
| 5.1.1. ARV MEDICINES | | | |
| 1 | Abac-11 | Abacavir (ABC) - 300mg - Tablet | 60 |
| 2 | Abla-11 | Abacavir (ABC) + Lamivudine (3TC) - (600mg + 300mg) - Tablet | 30 |
| 3 | Abla-10 | Abacavir (ABC) + Lamivudine (3TC) - (60mg + 30mg) - Tablet | 60 |
| 4 | Atri-10 | Atazanavir (ATV) + Ritonavir (RTV) - (300mg + 100mg) - Tablet | 30 |
| 5 | Efav-03 | Efavirenz (EFV) - 200mg - Capsule | 90 |
| 6 | Efav-01 | Efavirenz (EFV)- 50mg - Capsule | 30 |
| 7 | Efav-12 | Efavirenz (EFV) - 600mg - Tablet | 30 |
| 8 | Lami-10 | Lamivudine (3TC) - 150mg - Tablet | 60 |
| 9 | Late-10 | Lamivudine (3TC)+ Tenofovir (TDF) - (300mg + 300mg) - Tablet | 30 |
| 10 | Laet-10 | Lamivudine (3TC) + Efavirenz (EFV) +Tenofovir (TDF) - (300mg +600mg+300mg) - Tablet | 30 |
| 11 | Lanz-10 | Lamivudine (3TC)+ Nevirapine (NVP) + Zidovudine (AZT) - (30mg + 50mg + 60mg) - Tablet | 60 |
| 12 | Lanz-11 | Lamivudine (3TC) + Nevirapine (NVP) + Zidovudine (AZT) - (150mg + 200mg + 300mg) - Tablet | 60 |
| 13 | Lazi-10 | Lamivudine (3TC) + Zidovudine (AZT) - (30mg + 60mg) - Tablet | 60 |
| 14 | Lazi-11 | Lamivudine (3TC)+ Zidovudine (AZT) - (150mg+300mg) - Tablet | 60 |
| 15 | Lori-10 | Lopinavir + Ritonavir - (100mg + 25mg) - Tablet | 120 |
| 16 | Lori-11 | Lopinavir + Ritonavir - (200mg + 50mg) - Tablet | 120 |
| 17 | Lori-20 | Lopinavir + Ritonavir - (80mg + 20mg)/5ml - Oral Suspension | 60ml |
| 18 | Nevi-20 | Nevirapine - 10mg/1ml - Oral Suspension | 100ml |
| 19 | Nevi-21 | Nevirapine - 10mg/1ml - Oral Suspension | 240ml |
| 20 | Nevi-10 | Nevirapine - 200mg - Tablet | 60 |

| SN | Base Code | Description | Unit |
|---|-----------|--|--------|
| 5.1.2. OPPORTUNISTIC INFECTION MEDICINES | | | |
| 1 | Sutr-12 | Sulphamethoxazole + Trimethoprim - 800mg + 160mg - Tablet | 100x10 |
| 5.2. STI MEDICINES | | | |
| 1 | UIKt-15 | UL Cure (Benzathine penicillin + Ciprofloxacin + Acyclovir + Water for injection + Syringe) - (2.4MIU + 500mg + 400mg + 10ml + 5ml) - Tablet | Kit |
| 2 | Adkt-15 | Addis Cure (Azithromycin + Ceftriaxone + Water for injection + syringe) - (500mg + 250mg in Vial + 5ml +5ml) | Kit |
| 3 | Apkt-15 | Addis Cure Plus - (Azithromycin + Ceftriaxone + Metronidazole + Water for injection + syringe)-(500mg + 250mg in vial + 250mg 5ml) | Kit |
| 5.3. FAMILY PLANNING CONTRACEPTIVES | | | |
| 1 | Conm-70 | Condom Male Latex - 180mmx53mm | piece |
| 2 | Conf-70 | Condoms (Female) | piece |
| 3 | Eton-30 | Etonogestrel - 68mg - Capsule(Subdermal Implant) | Each |
| 4 | lucd-60 | IUCD (Intrauterine Contraceptive Device) - Long acting (CU380 A) | Each |
| 5 | Norg-30 | Levonorgestrel - 75 mg/rod of 2rods - implant rods (Sub dermal) with sterile insertion trocar | Each |
| 6 | Norg-10 | Levonorgestrel (D-Norgestrel) - 0.03mg - Tablet | Cycle |
| 7 | Norg-11 | Levonorgestrel (D-Norgestrel) - 0.75mg - Tablet | Cycle |
| 8 | Neff-10 | Levonorgestrel(D-Norgestrel) + Ethinylestradiol + Ferrous Fumerate - (0.15mg + 0.03mg +75mg) - Tablet | Cycle |
| 9 | Mepa-30 | Medroxyprogesterone Acetate - 150mg/ml in 1ml vial - Injection with 3ml Syringe (Aqueous suspension) | Vial |
| | | | |
| | | | |
| | | | |
| | | | |
| | | | |

| SN | Base Code | Description | Unit |
|---|-----------|---|-------|
| 5.4 MNCH MEDICINES | | | |
| 5.4.1. MATERNAL HEALTH MEDICINES | | | |
| 1 | Mimi-10 | Mifepristone + Misoprostol - (200mg (1 Tablet) + 200mcg (4 Tablets)) - Tablet | 20 |
| 2 | Miso-13 | Misoprostol - 200mcg - Tablet | 28 |
| 3 | Miso-60 | Misoprostol 25mcg Tablet | 4 |
| 5.5. TBL PHARMACEUTICALS | | | |
| 1 | Ison-11 | Isoniazid -(INH) 300mg -Tablet | 24x28 |
| 2 | TBkt-15 | RHZE (Rifampicin + Isoniazid + Pyrazinamide + Ethambutol) + RH (Rifampicin + Isoniazide) - (150mg+75mg+400mg+275mg) of 6x28 tablets + (150mg+75mg)of 12x28 tablets - Tablet | Kit |
| 3 | Vib6-11 | Pyridoxine HCL (Vitamin B6) - 25 mg - Tablet | 100 |
| 4 | Etha-11 | Ethambutol - 400mg - Tablet | 10x10 |
| 5.5.1. PEDIATRIC ANTI-TUBERCULOSIS MEDICINES | | | |
| 1 | Etha-10 | Ethambutol - 100mg - Tablet | 10x10 |
| 2 | Ison-10 | Isoniazid -(INH) 100 mg -Tablet | 10x10 |
| 3 | Riis-11 | RH(Rifampicin + Isoniazid) - (75mg+50mg) - Tablet | 28x3 |
| 4 | Riip-11 | RHZ(Rifampicin + Isoniazid + pyrazinamide) -(75mg+50mg+150mg) - Tablet | 28x3 |
| 5.5.2. SECOND LINE ANTI-TUBERCULOSIS MEDICINES | | | |
| 1 | Pasa-20 | Amino salicylic Acid Delayed - Release granules, 4gms - Solution | 25 |
| 2 | Amcl-11 | Amoxicillin + Clavulanic Acid - (500mg + 125mg) - Tablet (Film Coated) | 2x10 |
| 3 | Capr-35 | Capreomycin - 1g in vial - Powder for injection | Vial |
| 4 | Serc-01 | Cycloserine-250mg-capsule | 100 |
| 5 | Kans-30 | Kanamycin Sulfate - 1gm/4ml - Injection | 10 |
| 6 | Flox-10 | Levofloxacin - 250mg - Tablet | 100 |
| 7 | Moxi-10 | Moxifloxacin-400mg-tablet | 5 |
| 8 | Prot-10 | Prothionamide - 250mg - Tablet | 100 |
| 9 | Pyra-10 | Pyrazinamide- 400g-Tablet | 24x28 |
| 10 | Beda-10 | Bedaquiline -100mg-Tablet | 188 |
| 11 | Line-10 | Linezolid- 600mg- Tablet | 10x10 |
| 12 | Clof-10 | Clofazimine – 50mg- Tablet | 1000 |

| SN | Base Code | Description | Unit |
|--|-----------|---|---------|
| 13 | Clof-11 | Clofazimine – 100mg- Tablet | 500 |
| 14 | Dela-10 | Delamanid – 50mg - Tablet | 672 |
| 5.6. ANTI-LEPROSY MEDICINES | | | |
| 1 | Mbad-10 | Multibacillary-(MB) adult of 6 blister- Tablet | Pack |
| 2 | Mbch-10 | Multibacillary-(MB) child of 6 blister - Tablet | Pack |
| 3 | Pbad-10 | Paucibacillary- (PB) adult of 6 blister - Tablet | Pack |
| 4 | Pbch-10 | Paucibacillary- (PB) child of 6 blister - Tablet | Pack |
| 5 | Pred-12 | Prednisolone - 5mg - Tablet | Pack |
| 5.7. TUBERCULOSIS DIAGNOSTICS & LABORATORY REAGENTS | | | |
| 1 | Auo1-02 | Auramine - O | 100gm |
| 2 | Auo1-01 | Auramine - O | 50gm |
| 3 | Baf1-01 | Basic fuch sine - crystal | 25 gm |
| 4 | Eth1-03 | Ethanol - 96% RL | 1000ml |
| 5 | Hya1-01 | Hydrochloric Acid - Concentrated 37% | 1 liter |
| 6 | Oil1-02 | Immersion oil | 100ml |
| 7 | Meb1-01 | Methylene Blue - powder 25g | 25 gm |
| 8 | Phe1-02 | Phenol - Crystal | 1000mg |
| 9 | Phe1-01 | Phenol - Crystal | 500mg |
| 5.7.1. TB MEDICAL SUPPLIES | | | |
| 1 | Cart-70 | Cartridge (XPERT MTB/RIF) | 50 |
| 2 | Tucc-70 | Conical Centrifuge Tubes - for 50ml Centrifuge | 25 |
| 3 | MN95-70 | Mask - Of N95 | 20 |
| 4 | cups-70 | Sputum Cup | 1000 |
| 5.8. MALARIA PHARMACEUTICALS | | | |
| 1 | Arlu-10 | Artemether + Lumefantrine - (20mg+120mg) – Tablet (6x1) | 30 |
| 2 | Arlu-11 | Artemether + Lumefantrine - (20mg+120mg) – Tablet (6x2) | 30 |
| 3 | Arlu-12 | Artemether + Lumefantrine - (20mg+120mg) – Tablet (6x3) | 30 |
| 4 | Arlu-13 | Artemether + Lumefantrine - (20mg+120mg) – Tablet (6x4) | 30 |
| 5 | Arte-30 | Artesunate - 60mg - Vial - Injection | vial |
| 6 | Quic-10 | Chloroquine Phosphate - 150mg - Tablet | 100x10 |

| SN | Base Code | Description | Unit |
|----|-----------|---|-------|
| 7 | Quic-20 | Chloroquine Phosphate - 50mg base/5ml - Syrup | 60ml |
| 8 | Prim-10 | Primaquine Phosphate - 7.5mg base - Tablet | 1000 |
| 9 | Quin-10 | Quinine Sulfate - 300mg - Tablet | 10x10 |
| 10 | Rdtm-75 | Rapid Diagnostic Test (Malaria AGPF/PV) | 25 |

5.9. VACCINES

| | | | |
|---|---------|--|------|
| 1 | Bcgv-30 | BCG (Bacillus Chalmette Guerin) Vaccine | Dose |
| 2 | Bopv-30 | BOPV(Bivalent Oral Poliomyelitis) Vaccine | Dose |
| 3 | Inpv-30 | IPV (Inactivated Polio Vaccine) | Dose |
| 5 | Mevv-30 | Measles Virus Vaccine | Dose |
| 4 | Dtph-30 | Pentavalent Vaccine (DTP-Hib-Hep) | Dose |
| 6 | Pncv-30 | Pneumococcal Conjugate Vaccine (10 Valent) | Dose |
| 7 | Rovv-30 | Rota Virus Vaccine | Dose |
| 8 | Ttva-30 | TT (Tetanus Toxoid) Vaccine | Dose |

5.9.1. VACCINE ACCESSORIES

| | | | |
|---|---------|------------------------------|------|
| 1 | Syri-72 | Syringe,A-D, 0.5ml | 100 |
| 2 | Syri-70 | Syringe,A-D, 0.05ml | 100 |
| 3 | Syri-75 | Mixing 2ml syringe (BCG) | 100 |
| 4 | Syri-78 | Mixing 5ml syringe (Measles) | 100 |
| 5 | Boxs-70 | Safety Box | Each |

5.10. Nutrition

| | | | |
|---|---------|--|------------|
| 1 | Rutf-20 | Plumpy Nut, Ready to Use Therapeutic Food (RUTF) - Paste | 150 sachet |
| 2 | Rusf-20 | Plumpy Nut, Ready to Use Supplementary Food (RUSF) - 0 - Paste | 150 sachet |

References: The main references for this coding of the PFSA procurement list are; the FMOH national products master list, APTS coding list, Malaysia drug code 6th edition 2010, South Korea code and Ghana drug codes.

6. PROCUREMENT LIST SUMMARY

| Revolving Drug Fund Pharmaceuticals | |
|---|------------|
| Category | # of Items |
| Regular Medicines | 444 |
| Laboratory Pharmaceuticals | 178 |
| List of Medical Supplies | 205 |
| Routine Medical Equipment | 358 |
| Capital Medical Equipment | 87 |
| Total RDF List of Procurement | 1272 |
| Health Program Pharmaceuticals | |
| Category | # of Items |
| List of HIV/AIDS Pharmaceuticals | 24 |
| List of Family Planning Contraceptives | 9 |
| List of MNCH Pharmaceuticals | 3 |
| List of TBL Pharmaceuticals | 40 |
| List of Malaria Pharmaceuticals | 10 |
| List of Vaccines & Vaccine Accessories | 13 |
| List of Nutrition Supplements | 2 |
| Total program List of Procurement | 101 |
| Grand Total (RDF+ Program) Procurement List | 1373 |

General Reminder on Capital Medical Equipment, microbiology media and antibiotic discs, Kidney Transplant Medicines and related Supplies.

I. Capital Medical Equipment

- With an acquisition cost of \$5,000 or more, including but not limited to tax, freight, and installation cost;
- Are not disposable or consumable;
- Are stand alone;
- Has a useful life of one year or more;
- Qualifies as a tangible personal property (can be appraised for value).
- Will be Procured on Special request from Regional health Bureaus or Institutions or Service Delivery points, because of its cost intensive nature.

- Despite the definition, due to their importance and special requests from regional health bureaus 20 capital equipment are already included under “routine capital medical equipment” procurement list, to be quantified together with regular pharmaceuticals.
-
- 2. Microbiology media and antibiotic discs
 - Not included in the current Procurement list. But managed separately and will be procured separately based on request from EPHI, Regional Labs, Teaching Institutions or Special diagnostic or licensed research institutes.
- 3. Kidney Transplant Medicines and Related Supplies
 - Not included in the current Procurement list. In a similar manner, these products will be managed separately and will be procured on separate request from hemodialysis treatment & kidney transplant Centers.

7. ANNEXES

ANNEX I

Pharmaceuticals Procurement List Preparation Taskforce Members

| S/N | Name of Participants | Organization |
|-----|----------------------|--|
| 1 | Abiy Kiflom | PFSA/Quantification & Market Shaping Directorate |
| 2 | Alemwork Tilahun | Lab. Commodity Supply Chain Advisor-PFSA/PSM |
| 3 | Biyensa Negera | PFSA/Quantification & Market Shaping Directorate |
| 4 | Esubalew Belayneh | PFSA/Quantification & Market Shaping Directorate |
| 5 | Fantaye Teka | PFSA/Quantification & Market Shaping Directorate |
| 6 | Fikru Worku | NPPP - RHCS-PFSA/UNFPA |
| 7 | Kefale Merera | PFSA/Quantification & Market Shaping Directorate |
| 8 | Masresha Worku | Supply Chain Advisor-PFSA/CHAI |
| 9 | Mintesinot Nida | PFSA/Quantification & Market Shaping Directorate |
| 10 | Raffaele Joseph | PFSA/Quantification & Market Shaping Directorate |
| 11 | Readwan Mohammed | Supply Chain Advisor-PFSA/AIDSFree |
| 12 | Siraj Adem | PFSA/Quantification & Market Shaping Directorate |
| 13 | Tayachew Shasho | PFSA/Quantification & Market Shaping Directorate |
| 14 | Tigist Kassahun | PFSA/Quantification & Market Shaping Directorate |
| 15 | Tsion Tsegaye | PFSA/Quantification & Market Shaping Directorate |

ANNEX II

Participants of Medical Equipment List Preparation Workshop

| S/N | Name of Participants | Name of Organization | Position |
|-----|----------------------|----------------------|-------------------|
| 1 | Abaynesh Beyene | Meshualekiya HC | Health Officer |
| 2 | Abebe Bekele | EPHI | Biomedical |
| 3 | Abrahaleg Beyene | PFSA | BME |
| 4 | Adina Berie | PFSA | Director-PR |
| 5 | Adnew W/Tsehay | PFSA-AA | FCBO |
| 6 | Alemayehu Tarekegn | FMOH | PR |
| 7 | Azmeraw Mulualem | PFSA | FCO |
| 8 | Bekele Ashagrie | PFSA | Director |
| 9 | Birhan G/Kidan | Minilik II Hosp | Nurse (OR) |
| 10 | Birhan Hailu | Armed Forces Hosp | Nurse (OR) |
| 11 | Birkti G/Libanos | Armed Forces Hosp | Nurse (OR) |
| 12 | Daniel Kasa | Bole 17 HC | Health Officer |
| 13 | Dawit Getahun | PFSA | BME |
| 14 | Demeke Bitew | PFSA | Director |
| 15 | Desalew Adamu | Gondar Uni. Hosp | Nurse (OR) |
| 16 | Dr Yosef Sisay | St. Paul Hosp MMC | Dentist |
| 17 | Dr Zegene Taye | St. Paul Hosp MMC | Orthopedist |
| 18 | Dr. Aleazar Abeje | Alert Hosp | Obs/Gyneacologist |
| 19 | Dr. Amsale Merga | JUSH | Dentist |
| 20 | Dr. Ashenafi Kefene | Alert Hosp | Surgeon |
| 21 | Dr. Bezu Chemedo | Yekatit Hospital | Orthopedics |
| 22 | Dr. Gashaw Mesele | Gondar Uni. Hosp | Surgeon |
| 23 | Dr. Thomas Bogale | Blacklion | Neurosurgeon |
| 24 | Dr. Yohannes Tesfaye | Adama General Hosp | Medical Director |
| 25 | Dr. Zelalem Chimdesa | St. Peter | Surgeon |
| 26 | Endalkachew Mekonnen | PFSA | SDO |
| 27 | Ephrem Hassen | St. Paul Hosp MMC | Nurse (OR) |
| 28 | Fekede Shiferaw | PFSA | BCO |
| 29 | Henok Yheyis | PFSA | Cameraman |

| | | | |
|----|----------------------|--------------------|------------------|
| 30 | Kedir Abero | JUSH | Ophthalmology |
| 31 | Kefale Merara | PFSA | FCO |
| 32 | Lemlem Degafu | FMOH | Biomedical |
| 33 | Michael Tesfaye | AA RHB | Driver |
| 34 | Mohammed Abdu | Afar RHB | Biomedical |
| 35 | Mulugeta Getahun | PFSA | Director |
| 36 | Nigusu G/Yesus | FMOH | PR |
| 37 | Prof. Antonio Magana | Ayder hosp | Neurosurgeon |
| 38 | Rahel Desta | FMOH | Biomedical |
| 39 | Samuel Haile | SNNP RHB | Biomedical |
| 40 | Semir Jundi | Adama General Hosp | Nurse (OR) |
| 41 | Sintayehu Birhanu | St. Peter | Nurse (OR) |
| 42 | Sintayehu Silas | PFSA | BME |
| 43 | Siraj Adem | PFSA | FCBO |
| 44 | Solomom Getnet | AA RHB | Pharmacist |
| 45 | Tesfaye Diriba | St. Peter | Anesthetist |
| 46 | Tibebu Hailu | PFSA | Proc Officer |
| 47 | Walta Tekle | PFSA | BME |
| 48 | Wasihun Akeberegna | JUSH | Nurse (OR) |
| 49 | Wodajo Dibaba | PFSA | SDO |
| 50 | Yalew Molla | PFSA | Director |
| 51 | Yared Yiegezu | PFSA | Director |
| 52 | Yesem Mengistu | Alert Hosp | Nurse (OR) |
| 53 | Yusuf Gerada | Blacklion | Nurse (OR Major) |
| 54 | Zelalem Yigzaw | Benishangul | Biomedical |
| 55 | Dr. Tesfaye Tadesse | Minilik II Hosp | Ophthalmology |
| 56 | Enyew Taddie | Yekatit Hospital | OR Coor |
| 57 | Dr Berehe G/silassie | Ayder hosp | orthopedisit |
| 58 | Imad Aliy | DDRHB | BME |
| 59 | Abas Abdurazak | SRHB | BME |
| 60 | Anub Abdulrab | HRHB | BME |
| 61 | Dagimemhiwot | ARHB | BME |
| 62 | Dr.G/medhin kidne | Ayder hosp | Neurosurgeon |
| 63 | Readwan Mohammed | JSI/AIDSFree | SCA |

ANNEX III

Pharmaceuticals Procurement List endorsement workshop Participants

| S/N | Name of Participants | Organization |
|-----|----------------------|------------------|
| 1 | Abayneh Landu | PFSA/Head Office |
| 2 | Abdu Kassaw | PFSA/Dire Dawa |
| 3 | Abiy Kiflom | PFSA/Head Office |
| 4 | Abreham Sime | PFSA/Head Office |
| 5 | Admasu Teketel | PFSA/Head Office |
| 6 | Admasu wubante | PFSA/Head Office |
| 7 | Agumas Kindu | PFSA/Hawassa |
| 8 | Ahmed Kedir | PFSA/Head Office |
| 9 | Alemayhu G/mariam | PFSA/Mekelle |
| 10 | Alemwork Tilahun | PFSA/PSM |
| 11 | Amanuel Abebe | PFSA/Head Office |
| 12 | Asahil Yigzaw | PFSA/Mekelle |
| 13 | Azmeraw mulualem | PFSA/Head Office |
| 14 | Belete Tesema | PFSA/Head Office |
| 15 | Bemnet Amogne | PFSA/Adama |
| 16 | Betselot Yemane | PFSA/Head Office |
| 17 | Bezueyehu Tegegn | PFSA/Adama |
| 18 | Daniel Tamirat | PFSA/Head Office |
| 19 | Dawit G/yesus | PFSA/Mekelle |
| 20 | Demeke Bitew | PFSA/Head Office |
| 21 | Demelash Regassa | PFSA/Head Office |
| 22 | Desalegn Temesgen | PFSA/Head Office |
| 23 | Dress Terefe | PFSA/Head Office |
| 24 | Endeshaw Welde | PFSA/A.A |
| 25 | Esubalew Belayneh | PFSA/Head Office |
| 26 | Fantaye Teka | PFSA/Head Office |
| 27 | Faris Chiksa | PFSA/Dire dawa |
| 28 | Fekede Sheferaw | PFSA/Head Office |
| 29 | Fikru Worku | PFSA/UNFPA |

| | | |
|----|----------------------|---------------------|
| 30 | Fozia Mohammed | PFSA/Head Office |
| 31 | G/selassie Tegegn | PFSA/Hawassa |
| 32 | Getahun Zenebe | PFSA/Head Office |
| 33 | Goitom G/meskel | PFSA/A.A2 |
| 34 | Haile Arega | PFSA/Hawassa |
| 35 | Kefale Merera | PFSA/Head Office |
| 36 | Kibruyisfa Tesfaye | AAPHREM |
| 37 | Lulit Hailu | EPHI |
| 38 | Meseret Adugna | AARHB |
| 39 | Mihret Getahun | PFSA/Head Office |
| 40 | Mizan G/yohannes | Zewditu M.H |
| 41 | Mulugeta Abrha | KAMES |
| 42 | Mulugeta Getaneh | PFSA/Head Office |
| 43 | Raffaele Joseph | PFSA/Head Office |
| 44 | Readwan Mohammed | PFSA/AIDSFree |
| 45 | shewaweyn sehani | PFSA/Head Office |
| 46 | Solomon Nigussie | PFSA/Head Office |
| 47 | Teketel Ahadu | PFSA/Head Office |
| 48 | Tesfahun Haile | PFSA/Head Office |
| 49 | Tewodros Tsigeberhan | Yekatit 12 Hospital |
| 50 | Tigist Kassahun | PFSA/Head Office |
| 51 | Wodajo Dibaba | PFSA/Head Office |
| 52 | Zebebay Bekele | PFSA/Adama |
| 53 | Zemen Legesse | PFSA/Hawassa |

Annex IV

Procurement list base coding workshop participants

| S/N | Name of Participants | Organization / Work-place | Position |
|-----|--------------------------|---------------------------|----------------------------|
| 1 | Abay Teshager Zeleke | D/Tabor Hospital | Laboratory Head |
| 2 | Abebe Biranu Gebremariam | A. Ketema HC | Pharmacy Head |
| 3 | Abel Hailu Tefera | AA/A.K HC | Pharmacist |
| 4 | Abera Mengistu Desta | Alem Ketema Enat Hospital | Pharmacist |
| 5 | Abiy Kiflom | AA PFSA | Director |
| 6 | Alexyv Gizachew | AA GHSC-PSM | Pharmacist |
| 7 | Ayalew Adinew W/Agegn | AA GHSC-PSM | APTS Advisor |
| 8 | Birhanu Fentahun Kassie | DMRH | Pharmacy Head |
| 9 | Chanie Admasie Damtie | FHRH | Pharmacy Head |
| 10 | Derebie Ayanu Keba | Wolaita Sodo University | Pharmacy Head |
| 11 | Ebrahim Mohamed Usman | Fitche Hospital | Pharmacist |
| 12 | Endale Getachew Assefa | Boro Meda Hospital | Pharmacist |
| 13 | Ezra Yimam Nurye | Ataye Hospital | Pharmacy Head |
| 14 | Fisseha Tadele Getahun | Yejubre Hospital | Pharmacy Head |
| 15 | Frehiwot Tadesse Desta | AA N.Selk W 05 | Pharmacist |
| 16 | Getachew Bogale Belete | Kombolcha HC | Pharmacist |
| 17 | Getahun Zeleke Ayele | Bale Robe G Hospital | Pharmacy Head |
| 18 | Getu Dadi Bosie | Olenchiti Hospital | Pharmacist |
| 19 | Hussein Sukare Hassen | Yabello Hospital | Pharmacist |
| 20 | Kirubel Eshetu Ayele | D/Tabor Hospital | Electrical & computer Eng. |
| 21 | Legese Adisu Dinku | Meleka Oda ospital | Pharmacist |
| 22 | Mahlet Berelie Damtie | Bishoftu Hospital | Pharmacy Head |
| 23 | Mahlet Dejene Abebe | Sabyan Primery Hospital | Pharmacy Head |
| 24 | Marta Hilmariam alyu | AA N.Selk HC | Pharmacist |
| 25 | Mohammed Ahimed Gelgelu | Dodola G Hospital | Pharmacist |
| 26 | Mulugeta Dejene Amare | Alem Ketema Enat Hospital | Pharmacist |

| | | | |
|----|---------------------------|----------------------|------------------|
| 27 | Niguse kebede Tufa | Kuyu Hospital | Pharmacy Head |
| 28 | Solomon Abdellah Muktar | Hawassa University | Pharmacist |
| 29 | Solomon Fantahun Ewenetu | AA KK W.09 | Pharmacist |
| 30 | Tatek Girma Niguse | Fitche Hospital | Pharmacist |
| 31 | Taye Ayele Belayneh | Mehale Meda Hospital | Pharmacy Head |
| 32 | Temesgen Lealago Lambebo | Hawassa HSC | Pharmacist |
| 33 | Temesgen Obsa Terfa | Haramaya Hospital | Pharmacist |
| 34 | Tesfaye Molla Birhanu | Metema Hospital | CI/pharmacist |
| 35 | Tewodros Mitiku Admasu | Boro Meda Hospital | Pharmacist |
| 36 | Tigist Solomon Alemu | AA Gulele HC | Pharmacist |
| 37 | Tsegaeyesus Chanie Ayenew | Lumama Hospital | Pharmacist |
| 38 | Wudie Baileyagn Amare | D/Tabor Hospital | Lab-Technologist |

